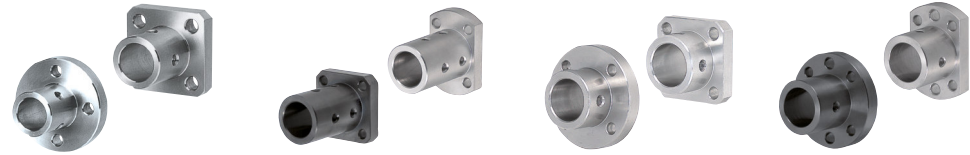
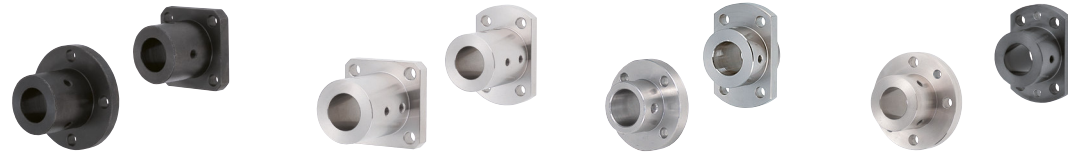


Shaft Supports

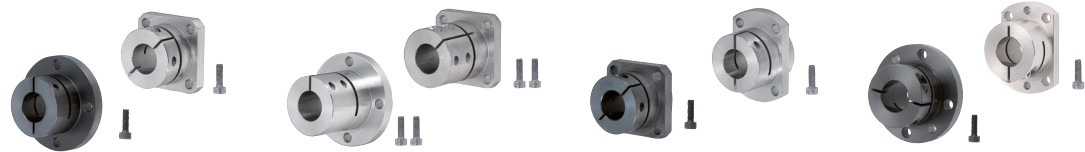
Shaft Supports



Product Name	Flanged Mount - Standard	Standard / Long Sleeve Type	Standard With Pilot	Standard with Dowel Hole Type
Page	233	233	234	234



Product Name	Flanged Mount, Thick Sleeve - Standard	Wide / Long Sleeve Type	Wide with Pilot	Wide with Dowel Holes
Page	235	235	236	236



Product Name	Flanged Mount Slit - Standard	Slit Long Sleeve Type	With Slit Pilot	With Slit Dowel Holes
Page	237	237	238	238



Product Name	Flanged Mount - Compact Standard	Compact Long Sleeve Type	With Keyway	Back Mount
Page	239	239	239	240



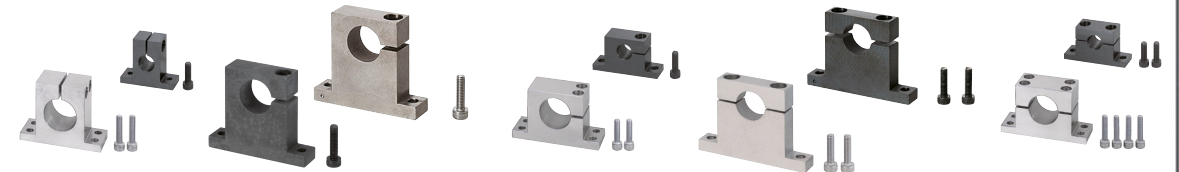
Product Name	Flanged Mount - Split	Flanged Slit (Cast) - Standard	Long Sleeve	T-Shaped Slit (Cast) - Standard
Page	240	241	241	242



Product Name	T-Shaped Slit (Cast) - Wide	T-Shaped (Cast) - Standard	Side Slit	Wide, Side Slit	T-Shaped Split (Cast) - Standard
Page	242	243	243	243	244



Product Name	T-Shaped Split (Cast) - Wide	T-Shaped Set Screw (Machined) - Standard / With Dowel Holes	Wide	T-Shaped Slit (Machined) - Standard / With Dowel Holes
Page	244	245	245	246



Product Name	T-Shaped Slit (Machined) - Wide	T-Shaped Side Slit (Machined) - Standard	Wide	T-Shaped Side Split (Machined) - Standard	Wide
Page	246	247	247	248	248



Product Name	Compact (Machined) - Set Screw	Wide, Set Screw	Side Slit	Split
Page	249	249	249	250



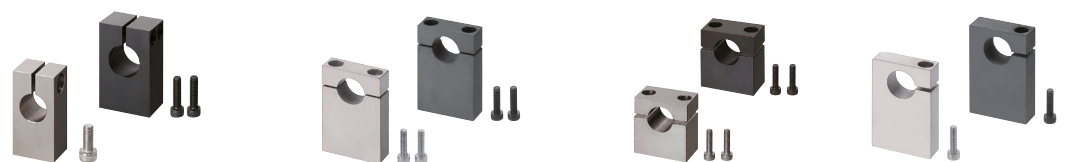
Product Name	Compact (Machined) - Wide Split	T-Shaped (Machined) - With Clamp Lever	Hinged Type	Hinged (Machined) - L-Shaped
Page	250	251	251	252



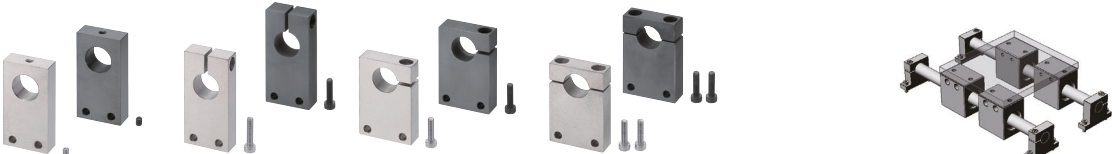
Product Name	Hinged (Machined) - Bottom Mount	Side Mount	L-Shaped (Cast) - Standard / Slit / Side Slit / Split
Page	252	252	253, 254



Product Name	L-Shaped (Machined) - Standard / Slit / Side Slit / Split	Bottom Mount Set Screw (Machined) - Standard	Wide	Bottom Mount Slit (Machined) - Standard
Page	255, 256	257	257	258



Product Name	Bottom Mount Slit (Machined) - Wide	Bottom Mount Split (Machined) - Standard	Wide	Bottom Mount (Machined) - Side Slit
Page	258	259	259	260



Product Name	Side Mount (Machined) - Standard	Slit	Side Slit	Split	Linear Unit
Page	261	261	262	262	247, 248, 254

Shaft Supports - Overview

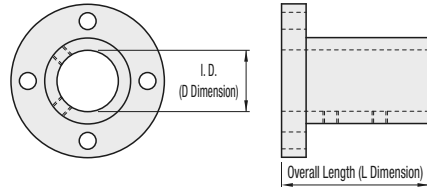
About I.D. Accuracy

- Features · Combination use of MISUMI Shafts (standard g6, f8 and h5) and MISUMI Shaft Supports are recommended.
- Slit is machined after the mounting hole D is bored to H7 tolerance. The tolerance may become H8 or so depending on the machining condition.

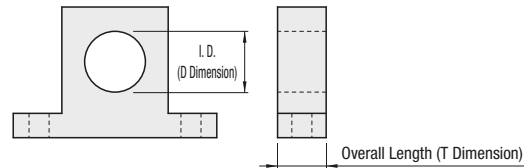
Relationship between I.D. (D dimension) and Overall Length of Guide (L, T dimensions)

- Features · Standard Type spec. is $L, T = D \times 1.3$ or less approx.; Long Sleeve Type and Wide Type spec. is $L, T = D \times 1.3$ to 2.0 approx.
- Rigidity of Long Sleeve Type and Wide Type is enhanced as they have longer shaft holding area.
- $L = D \times 2.0$ or more are available under the index of Posts. Please refer to **P.2115~2160**.

(Ex.) Flanged Mount



(Ex.) T-Shaped



Manufacturing Method

- Features · MISUMI shaft supports are available in Machined Types and Cast Types.
- Cast products are offered at lower prices than machined products. Precision cast supports have slight de-molding draft and gritty surfaces but the dimensions are precisely finished as shown in the catalog.

About Materials

- Features · EN 1.0038 Equiv., EN 1.1191 Equiv., EN 1.4301 Equiv. and Aluminum materials (EN AC-51300 Equiv. for Cast) are available.

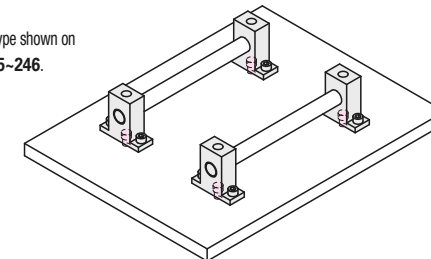
Basic Shape	How to Mount	Through Hole	Pilot	Dowel Hole	Tapped Hole
		4-Through Holes	Pilot	2-Dowel Holes (H7)	4-Tapped Holes
Characteristic		Mounted by using tapped holes on mounting plate.	Easy positioning during assembly. Easy repeatability during maintenance.	Suitable when mounting plates are thin or may have insufficient strength like aluminum.	
Cast Product	Flanged Type	Features: Most economical. Longer sleeve than standard type improves shaft gripping power.			
		P.241	-	-	-
	Set Screw	Features: Set screws may scratch the shaft during clamping; however, this is the most economical machined product.			
		P.233	P.235 (Thick Sleeve)	P.234	P.236 (Thick Sleeve)
	Slit	Features: Tightening doesn't damage shafts during clamping.			
		P.237	P.238	P.238	-
	Compact	Features: Small O.D. contributes to space saving. Tightening doesn't damage shafts.			
		P.239	-	-	-
	Split	Features: Easy maintenance such as shaft removal, etc..			
		P.240	-	-	-
	Back Mount	Features: Shaft can be fastened securely using a tapped hole on the shaft end.			
		P.240	-	-	-

Basic Shape	Shaft Securing Method	Set Screw	Slit	Side Slit	Split	Hinged
		Characteristic	Most economical.	Shafts can be secured without damage.		Easy maintenance.
Cast, Machined Product	T-Shaped	Features: Suitable when lengthwise space is limited.				
		P.243	P.242	P.243	P.244	-
		P.245	P.246	P.247	P.248	P.251
	L-Shaped	Features: Suitable when crosswise space is limited.				
		P.253	P.253	P.254	P.254	-
		P.255	P.255	P.256	P.256	P.252
	Compact	Features: The most compact space-saving design in all dimensions.				
		P.249	-	P.249	P.250	-
	Bottom Mount	Features: Screw mount from underside is effective when the mounting host is too thin to tap, and in space limited applications.				
		P.257	P.258	P.260	P.259	P.252
	Side Mount	Features: Enables mounting on the plate side.				
		P.261	P.261	P.262	P.262	P.252

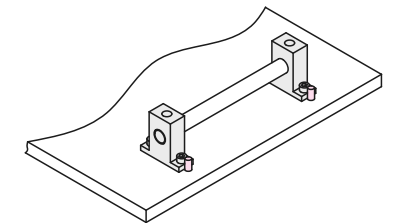
Positioning and Repeatability

- Support units are located with dowel holes on the units and dowel pins pressed into the mounting plate.

Use With Dowel Hole Type shown on **P.233~238, P.245~246.**

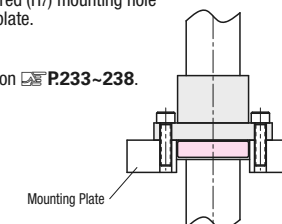


- Support units are located with dowel pins pressed into the mounting plate against unit housing's vertical faces.

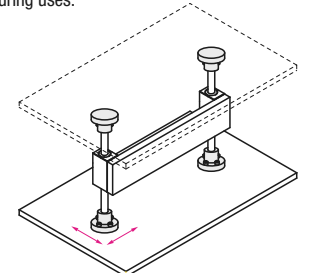


- Support units are located with the housing pilot and a precision bored (H7) mounting hole made in the mounting plate.

Use Pilot Type shown on **P.233~238.**



- Use clearances of mounting holes (through holes) and make adjustments and positioning during uses.



Shaft Supports Flanged Mount - Standard

Standard - Through/Tapped Mounting Holes / Long Sleeve / With Pilot / With Dowel Holes

■ **Features:** Tapped Mounting Hole Type is suitable when tapping is difficult due to insufficient mounting plate strength (aluminum) or thickness.

Standard Through Mounting Holes, Tapped Mounting Holes



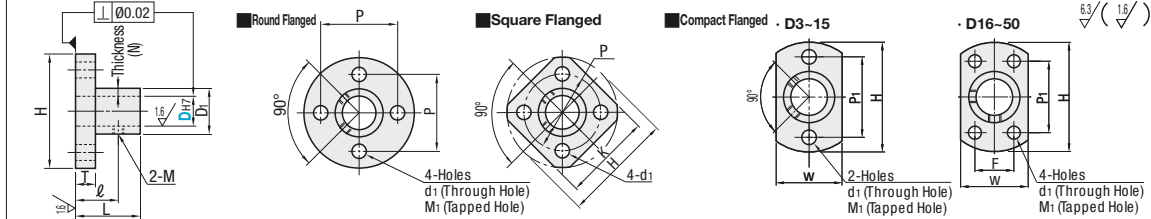
Long Sleeve



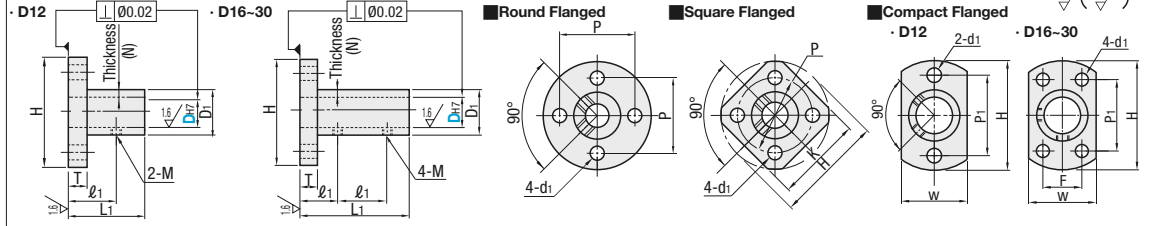
Type	Through Mounting Holes			Tapped Mounting Holes			Material	Surface Treatment
	Round Flanged	Square Flanged	Compact Flanged	Round Flanged	Square Flanged	Compact Flanged		
Standard	STHRB	STHSB	STHCB	STHRBT	STHSBT	STHCBT	General Structural Steel	Black Oxide
	STHR	STHS	STHC	STHRT	STHST	STHCT	General Structural Steel	Electroless Nickel Plating
	SSTHR	SSTHS	SSTHC	SSTHRT	SSTHST	SSTHCT	EN 1.4301 Equiv.	-
Long Sleeve	ATHR	ATHS	ATHC	-	-	-	Aluminum Alloy 6000 series	Clear Anodize
	STHRBL	STHSBL	STHCL	-	-	-	General Structural Steel	Black Oxide
	STHRL	STHSL	STHCL	-	-	-	General Structural Steel	Electroless Nickel Plating
	SSTHRL	SSTHSL	SSTHCL	-	-	-	EN 1.4301 Equiv.	-

⚠ See Alterations section for inclusion of a Hex Socket Set Screw.

Standard Type with Through/Tapped Mounting Holes



Long Sleeve



Part Number		DH7	Sleeve Thickness (N)	L	L1	D1	H	T	ℓ	ℓ1	M (Coarse)	P	K	W	P1	F	d1	M1 (Coarse)
Type	Standard - Through Mounting Holes																	
Standard - Through Mounting Holes	3	+0.010 0	2.5	10	-	8	22	3	7	-	M3	15	16	8	15	-	3.5	-
Round Flanged	4	+0.012 0	12	10	9	24	3	7	-	M3	17	19	9	17	-	4.5	M4	-
Square Flanged	5	+0.012 0	12	10	10	25	3.5	7	-	M3	18	20	10	18	-	3.5	-	-
Compact Flanged	6	+0.012 0	3	15	12	28	3.5	7	-	M3	20	22	12	20	-	4.5	M4	-
Standard Type with Tapped Mounting Holes (Only for D dimension denoted with * mark)	8	+0.015 0	2	20	12	28	-	10	-	M4	20	22	16	20	-	3.5	-	-
Round Flanged	8M	+0.015 0	2	20	14	30	-	12	-	M4	22	23	18	22	-	4.5	M4	-
Square Flanged	10	+0.015 0	2	20	14	30	-	12	-	M4	22	23	18	22	-	3.5	-	-
Compact Flanged	10M	+0.015 0	2	20	14	30	-	12	-	M4	22	23	18	22	-	4.5	M4	-
Standard Type with Tapped Mounting Holes (Only for D dimension denoted with * mark)	*12	+0.018 0	2.5	24	30	16	36	6	15	15	M4	26	28	20	26	-	4.5	M4
Round Flanged	13	+0.018 0	2.5	30	-	18	38	-	18	-	M4	28	30	22	28	-	5.5	M5
Square Flanged	15	+0.018 0	3	30	20	40	-	18	-	M4	30	32	24	30	-	3.5	-	-
Compact Flanged	16	+0.018 0	3	32	48	22	42	-	19	16	M4	32	33	26	28	16	4.5	M4
Standard Type with Tapped Mounting Holes (Only for D dimension denoted with * mark)	*18	+0.021 0	4	32	-	28	50	8	20	-	M5	39	39	32	31	22	6.6	M6
Round Flanged	*20	+0.021 0	4	32	48	28	50	8	20	16	M5	39	39	32	31	22	5.5	M5
Square Flanged	*25	+0.021 0	5	38	57	33	55	8	23	19	M5	44	44	37	36	24	6.6	M6
Compact Flanged	*30	+0.025 0	10	50	-	60	90	10	24	19	M6	52	52	42	41	27	9	M8
Standard Type with Tapped Mounting Holes (Only for D dimension denoted with * mark)	40	+0.025 0	10	50	-	45	80	10	30	-	M6	65	65	55	56	33	-	-
Long Sleeve Type (Only for D dimension denoted with * mark)	50	+0.025 0	10	50	-	70	100	10	30	-	M6	75	75	65	65	38	-	-
												85	90	75	74	43	-	-

⚠ Tapped Mounting Hole Type is available only for D dimension denoted with * mark. ⚠ Long Sleeve Type is available only for D dimension denoted with * mark. ⚠ Only EN 1.0038 Equiv. and EN 1.4301 Equiv. are applicable to D dimension 8M and 10M (EN AW-6061 Equiv. is not applicable).

Standard

D	Round Flanged			Square Flanged			Compact Flanged		
	STHRB	STHR	SSTHR	STHSB	STHS	SSTHS	STHCB	STHC	SSTHC
3									
4									
5									
6									
8, 8M ²									
10, 10M ²									
12 ²									
13									
15 ²									
16 ²									
18									
20 ²									
25 ²									
30 ²									
35									
40									
50									

Long Sleeve

D	Round Flanged			Square Flanged			Compact Flanged		
	STHRBL	STHRL	SSTHRL	STHSBL	STHSL	SSTHSL	STHCL	STHCL	SSTHCL
12									
13									
16									
20									
25									
30									

■ **Notes on Selecting Standard Type**
 ⚠ Tapped Mounting Hole Type is available only for D dimension denoted with * mark.
 ⚠ Aluminum is not available for products with D dimension 8M and 10M.

Ordering Example Part Number **STHRL10**

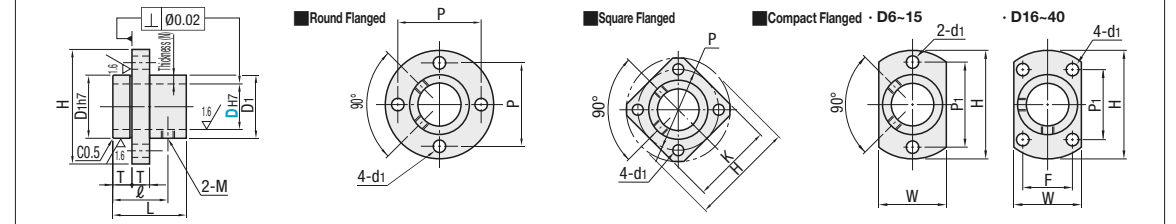
■ **Features:** Easy positioning during assembly.

With Pilot



Round Flanged	Square Flanged	Compact Flanged	Material	Surface Treatment
STHRB	STHSB	STHCB	General Structural Steel	Black Oxide
STHR	STHS	STHC	General Structural Steel	Electroless Nickel Plating
SSTHR	SSTHS	SSTHC	EN 1.4301 Equiv.	-

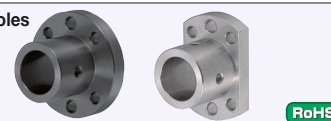
⚠ See Alterations section for inclusion of a Hex Socket Set Screw.



Part Number		DH7	Sleeve Thickness (N)	L	D1	H	T	ℓ	M (Coarse)	P	K	W	P1	F	d1	Unit Price		
Type	Standard - Through Mounting Holes															Round Flanged	Square Flanged	Compact Flanged
Round Flanged	6	+0.012 0	3	15	12	28	3.5	11	M3	20	22	12	20	-	3.5			
Square Flanged	8	+0.015 0	2	18	14	30	-	14	M4	22	23	18	22	-	4.5			
Compact Flanged	10	+0.015 0	2	20	14	30	-	15	M3	22	23	18	22	-	3.5			
	10M	+0.015 0	2	20	14	30	-	15	M4	22	23	18	22	-	4.5			
	12	+0.018 0	2	24	16	36	-	18	M4	26	28	20	26	-	4.5			
	15	+0.018 0	2.5	30	20	40	-	6	M4	30	32	24	30	-	4.5			
	16	+0.018 0	3	32	22	42	-	22	M4	32	33	26	28	16	4.5			
	20	+0.021 0	4	32	28	50	-	8	M5	39	39	32	31	22	5.5			
	25	+0.021 0	4	38	33	55	-	8	M5	44	44	37	36	24	6.6			
	30	+0.025 0	10	50	60	90	-	10	M6	52	52	42	41	27	6.6			
	40	+0.025 0	10	50	60	90	-	10	M6	75	75	65	65	38	9			

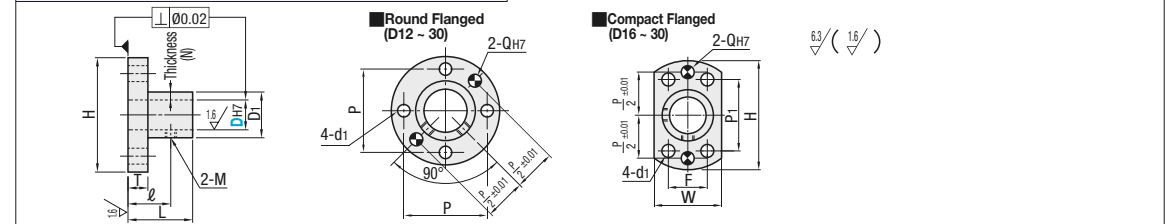
Ordering Example Part Number **STHIS20**

With Dowel Holes



Round Flanged	Compact Flanged	Material	Surface Treatment
STHRBK	STHCBK	EN 1.1191 Equiv.	Black Oxide
STHRK	STHCK	EN 1.1191 Equiv.	Electroless Nickel Plating
SSTHRK	SSTHCK	EN 1.4301 Equiv.	-

⚠ See Alterations section for inclusion of a Hex Socket Set Screw.



Part Number		DH7	Sleeve Thickness (N)	L	D1	H	T	ℓ	M (Coarse)	P	W	P1	F	d1	Q	Unit Price		
Type	Standard - Through Mounting Holes															Round Flanged	Compact Flanged	Compact Flanged
Round Flanged	12	+0.018 0	2.5	24	16	36	6	15	M4	26	20	28	-	4				
Square Flanged	13	+0.018 0	2.5	24	18	38	6	15	M4	28	22	28	-	4				
Compact Flanged	15	+0.018 0	3	30	20	40	6	18	M4	30	24	30	-	4				
	16	+0.018 0	3	32	22	42	6	19	M4	32	26	28	16	4				
	18	+0.021 0	5	32	28	50	8	20	M5	39	32	31	22	5				
	20	+0.021 0	5	32	28	50	8	20	M5	39	32	31	22	5				
	25	+0.021 0	4	38	33	55	8	23	M5	44	37	36	24	6				
	30	+0.025 0	4	38	33	55	8	23	M6	44	37	36	24	6				
										52	42	41	27	6.6				

⚠ Compact Flange Type is available only for D dimensions 16-30.

Ordering Example Part Number **SSTHCK20**

Alterations Code	Hex Socket Set Screw Included
	MB
Spec.	Hex socket set screws come with as a set. Screw head may protrude from outer cylinder (D1). ⚠ Included screws are EN 1.7220 Equiv. (Black Oxide) for Black Oxide and Black Anodized Products. ⚠ Products other than above are Stainless Steel products. ⚠ Long Sleeve Type comes with 4 set screws; others come with 2 set screws.
	D M x Length
	3, 4, 5, 6, 8, 10 M3x3
	8M, 10M, 12, 13, 15, 16 M4x3
	18, 20, 25 M5x4
	30, 35, 40, 50 M6x5

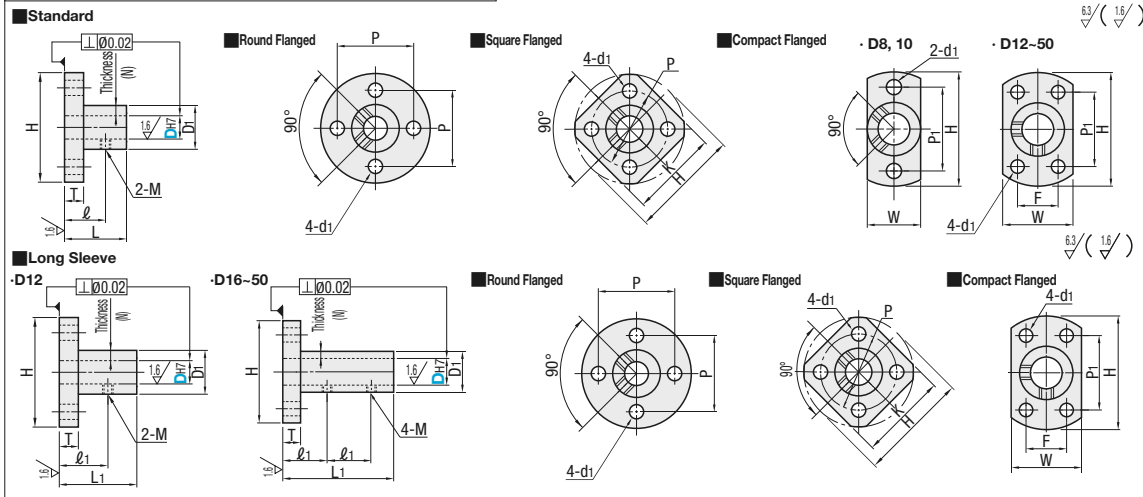
Shaft Supports Flanged Mount, Thick Sleeve

Standard / Long Sleeve / With Pilot / With Dowel Holes

■ **Features:** Thicker sleeve than the standard type P233 enhances strength against falling.

Type	Round Flanged	Square Flanged	Compact Flanged	Material	Surface Treatment
Standard	STHRBN	STHSBN	STHCBN	General	Black Oxide
	STHRN	STHSN	STHCN	Structural Steel	Electroless Nickel Plating
	SSTHRN	SSTHSN	SSTHCN	EN 1.4301 Equiv.	-
	SSTHRNA	-	SSTHCNA	Aluminum Alloy 5000 series	Clear Anodize
Long Sleeve	STHRBNL	STHSBNL	STHCBNL	General	Black Oxide
	STHRNL	STHSNL	STHCNL	Structural Steel	Electroless Nickel Plating
	SSTHRNL	SSTHSNL	SSTHCNL	EN 1.4301 Equiv.	-
	-	-	-	-	-

⚠ See Alterations section for inclusion of a Hex Socket Set Screw.



Part Number	Type	DH7	Sleeve Thickness (N)	L	L1	D1	H	T	l	l1	M (Coarse)	P	K	W	P1	F	d1
Standard		8 ²	+0.015	3.5	16	-	15	32	5	10	M3	25	25	15	25	-	3.5
Round Flanged	Square Flanged	10 ²	0	5	20	30	22	40	12	12	M3	30	30	20	30	-	4.5
STHRBN	STHSBN	STHCBN			24	30	22	40	15	15	M3	32	32	25	28	16	4.5
STHRN	STHSN	STHCN			26	-	24	42	16	-	M4	34	34	27	28	18	5.5
SSTHRN	SSTHSN	SSTHCN			30	-	26	48	18	-	M4	38	38	29	32	18	5.5
(Only for D dimension denoted with ² mark)		13	0	5.5	32	48	28	50	19	16	M5	40	39	32	33	22	5.5
STHRNA	STHCNA				35	63			20		M5	50	48	40	42	25	6.6
		15	0	6	40	68	55	89	23	19	M6	55	53	45	45	30	6.6
		16	0	7.5	45	73	60	82	24	25	M6	60	58	50	48	35	6.6
		20	0	10	55	89	72	104	24	30	M8	72	70	61	58	42	9
Long Sleeve (Only for D dimension denoted with ¹ mark)		25	0	10	70	104	87	114	30	25	M8	87	80	76	68	54	9
STHRBNL	STHSBNL	STHCBNL			80	114	97	141	30	25	M8	97	90	86	73	64	9
STHRNL	STHSNL	STHCNL															
SSTHRNL	SSTHSNL	SSTHCNL															

⚠ Clear and black anodized products are available for D dimension denoted with ² mark only. ⚠ Long Sleeve Type is available only for D dimension denoted with ¹ mark.

D	Unit Price											
	Round Flanged			Square Flanged				Compact Flanged				
	STHRBN	STHRN	SSTHRN	STHSBN	STHSN	SSTHSN	STHCBN	STHCN	SSTHCN	STHCNA		
8												
10												
12												
13												
15												
16												
20												
25												
30												
35												
40												
50												

D	Unit Price								
	Round Flanged			Square Flanged			Compact Flanged		
	STHRBNL	STHRNL	SSTHRNL	STHSBNL	STHSNL	SSTHSNL	STHCBNL	STHCNL	SSTHCNL
12									
16									
20									
25									
30									
35									
40									
50									

■ **Features:** Easy positioning during assembly.

Round Flanged	Compact Flanged	Material	Surface Treatment
STHRBN	STHCBN	General	Black Oxide
STHRN	STHCN	Structural Steel	Electroless Nickel Plating

⚠ See Alterations section for inclusion of a Hex Socket Set Screw.

Part Number	Type	DH7	Sleeve Thickness (N)	L	D1	H	T	l	M (Coarse)	P	W	P1	F	d1	Unit Price				
															Round Flanged	Compact Flanged	STHRBN	STHRN	STHCBN
8	Round Flanged	8	+0.015	3.5	18	15	32	5	14	M3	25	15	25	-	3.5				
10	Compact Flanged	10	0	5	20	20	38	15	15	M3	30	20	30	-	4.5				
12	Round Flanged	12	+0.018	6	24	22	40	6	18	M4	40	32	28	16	5.5				
16	Compact Flanged	16	0	7.5	32	28	50	6	22	M4	40	32	33	22	5.5				
20	Round Flanged	20	+0.021	8	32	35	63	8	24	M5	50	40	42	25	6.6				
25	Compact Flanged	25	0	10	40	68	80	27	27	M5	55	45	45	30	6.6				
30	Round Flanged	30	0	12	45	73	100	29	29	M6	60	50	48	35	6.6				

Round Flanged	Compact Flanged	Material	Surface Treatment
STHRBNK	STHCBNK	General	Black Oxide
-	STHCNK	Structural Steel	Electroless Nickel Plating

⚠ See Alterations section for inclusion of a Hex Socket Set Screw.

Part Number	Type	DH7	Sleeve Thickness (N)	L	D1	H	T	l	M (Coarse)	P	W	P1	F	d1	Q	Unit Price			
																Round Flanged	Compact Flanged	STHRBNK	STHCBNK
12	Round Flanged	12	+0.018	5	24	22	40	6	15	M4	32	25	28	16	4.5	4			
16	Compact Flanged	16	0	6	32	28	50	6	19	M4	40	32	33	22	5.5	5			
20	Round Flanged	20	+0.021	7.5	35	63	8	20	23	M5	50	40	42	25	6.6	6			
25	Compact Flanged	25	0	10	40	68	8	23	23	M5	55	45	45	30	6.6	6			
30	Round Flanged	30	0	12	45	73	10	24	24	M6	60	50	48	35	6.6	6			

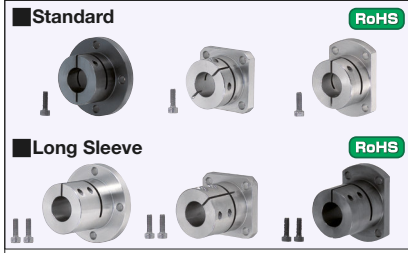
Ordering Example: Part Number STHRBN10, STHRNL20, STHCBN8M

Alterations: Part Number - (MB) STHRBN10 - MB, STHRNL12 - MB

Alterations	Hex Socket Set Screw Included
Code	MB
Spec.	Hex socket set screws come with as a set. Screw head may protrude from outer cylinder (D1). Included screws are EN 1.7220 Equiv. (Black Oxide) for Black Oxide and Black Anodized products. Products other than above are Stainless Steel products. Long Sleeve Type comes with 4 set screws; others come with 2 set screws.
	D M x Length
	8, 10 M3x3
	8M, 12, 13, 15, 16 M4x3
	20, 25 M5x4
	30, 35 M6x5
	40, 50 M8x6

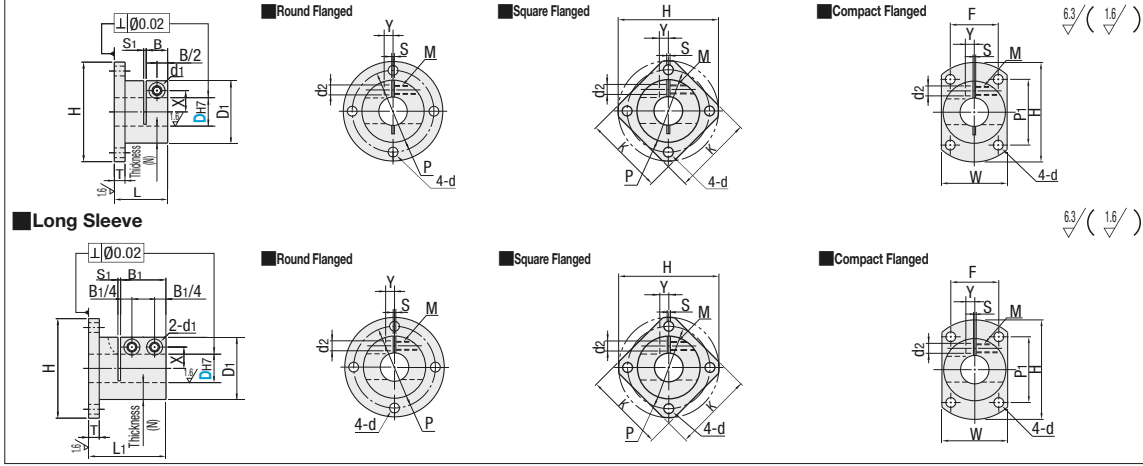
Shaft Supports Flanged Mount with Slit Type

Standard Type / Long Sleeve Type



Type	Round Flanged	Square Flanged	Compact Flanged	Material	Surface Treatment	Accessory
Standard	STHWRB	STHWSB	STHWCB	EN 1.1191 Equiv.	Black Oxide	Hex Socket Head Cap Screw 1 pc.
	STHWR	STHWS	STHWC	EN 1.4301 Equiv.	Electroless Nickel Plating	Hex Socket Head Cap Screw 1 pc. (Stainless Steel)
	SSTHWR	SSTHWS	SSTHWC	EN 1.4301 Equiv.	-	-
Long Sleeve	STHWRBL	STHWSBL	STHWCBL	EN 1.1191 Equiv.	Black Oxide	Hex Socket Head Cap Screw 2 pcs.
	STHWR	STHWS	STHWC	EN 1.4301 Equiv.	Electroless Nickel Plating	Hex Socket Head Cap Screw 2 pcs. (Stainless Steel)
	SSTHWR	SSTHWS	SSTHWC	EN 1.4301 Equiv.	-	-

Standard - Through Mounting Holes



Part Number	Type	DH7	Sleeve Thickness (N)	L	L1	D1	H	T	B	B1	P	K	W	P1	F	d	S	S1	X	Y	d1	d2	M	Included Screw M x Length	Unit Price		
																									Round Flanged	Square Flanged	Compact Flanged
Standard	Round Flanged	8	+0.015	8.5	18	25	39	5	10	-	32	30	27	25	20	3.5	1.5	7.5	3.5	7.5	4.6	M4	M4x10	-	-	-	
		10	0	10	20	30	49	10	3	-	40	38	32	33	23	4.5	1.5	10	3	11	4	-	M5x10	-	-	-	
	Square Flanged	*12	+0.018	9.5	24	-	-	6	-	20	42	40	34	35	25	5.5	1.5	11	4	-	-	-	-	M5x12	-	-	-
		13	0	10	27	-	-	12	-	24	46	44	37	37	27	5.5	1.5	12	5	9	5.6	M5	M5x12	-	-	-	
	Compact Flanged	*15	+0.018	9.5	30	45	35	56	6	12	46	44	37	37	27	5.5	1.5	12	5	9	5.6	M5	M5x12	-	-	-	
		*16	0	10	32	48	40	64	8	24	52	50	42	43	30	6.6	2	14	6	-	-	-	M5x16	-	-	-	
	Long Sleeve (only applicable to D dimension denoted with * mark)	Round Flanged	*20	+0.021	10	38	57	45	69	8	24	57	54	47	46	34	6.6	2	17	6	-	-	-	M6x20	-	-	-
			*25	0	12.5	40	60	55	79	10	15	30	67	60	57	50	45	9	20	10	12	6.6	M6	M6x20	-	-	-
		Square Flanged	*30	+0.025	15	55	82.5	70	104	12	18	36	87	81	76	67	55	9	23	12	14	9	M8	M8x26	-	-	-
			*35	0	17.5	65	97.5	85	119	12	22	44	102	94	91	82	60	9	26	13	14	9	M8	M8x26	-	-	-
Compact Flanged		*40	+0.025	15	55	82.5	70	104	12	18	36	87	81	76	67	55	9	26	13	14	9	M8	M8x26	-	-	-	
	*50	0	17.5	65	97.5	85	119	12	22	44	102	94	91	82	60	9	32	16	18	11	M10	M10x32	-	-	-		

Long Sleeve Type is available only for D dimension denoted with * mark.

D	Unit Price		
	Round Flanged	Square Flanged	Compact Flanged
8			
10			
12			
13			
15			
16			
20			
25			
30			
35			
40			
50			

Ordering Example: Part Number STHWR10

D	Unit Price		
	Round Flanged	Square Flanged	Compact Flanged
12			
16			
20			
25			
30			
35			
40			
50			

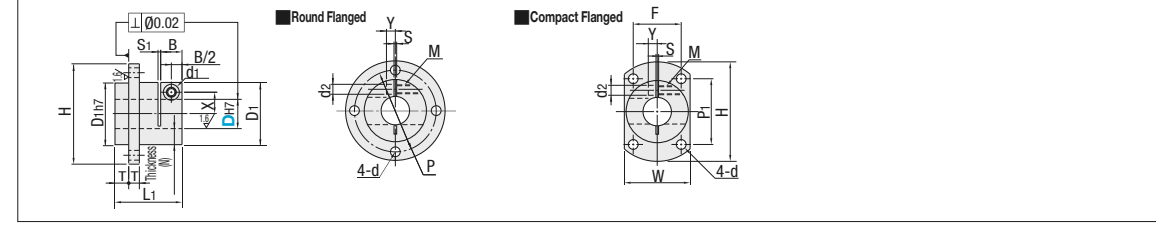
Shaft Supports Flanged Mount with Slit Type

With Pilot / With Dowel Holes

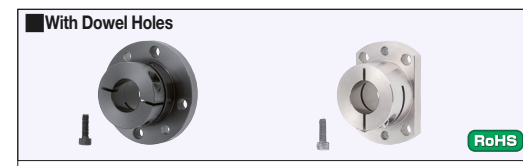
Features: Easy positioning during assembly.



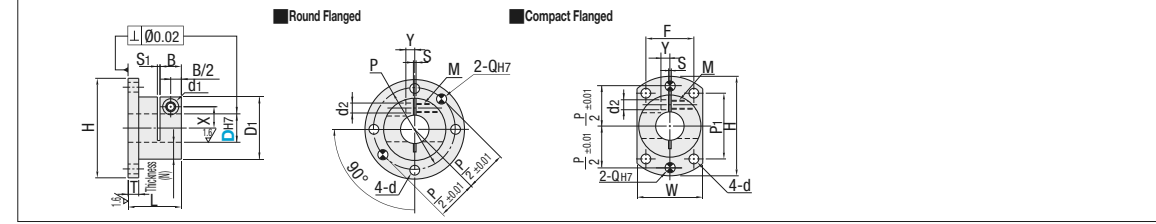
Type	Round Flanged	Compact Flanged	Material	Surface Treatment	Accessory
With Pilot	STHWIRB	STHWICB	EN 1.1191 Equiv.	Black Oxide	Hex Socket Head Cap Screw 1 pc.
	STHWIR	STHWIC	EN 1.4301 Equiv.	Electroless Nickel Plating	Hex Socket Head Cap Screw 1 pc. (Stainless Steel)
	SSTHWIR	SSTHWIC	EN 1.4301 Equiv.	-	-



Part Number	Type	DH7	Sleeve Thickness (N)	L	D1	H	T	B	P	W	P1	F	d	S	S1	X	Y	d1	d2	M	Included Screw M x Length	Unit Price			
																						Round Flanged	Square Flanged	Compact Flanged	
Round Flanged	STHWIRB	8	+0.015	8.5	23	25	39	5	10	32	27	25	20	3.5	1.5	7.5	3.5	7.5	4.6	M4	M4x10	-	-	-	
		10	0	10	25	30	49	10	3	40	32	33	23	4.5	1.5	10	3	11	4	-	M5x10	-	-	-	
	STHWIR	12	+0.018	10	28	32	52	6	12	42	34	35	25	5.5	1.5	11	4	-	-	-	-	M5x12	-	-	-
		15	0	10	33	35	56	6	12	46	37	37	27	5.5	1.5	12	5	9	5.6	M5	M5x12	-	-	-	
	Compact Flanged	STHWICB	20	+0.021	10	40	40	64	8	12	46	37	37	27	5.5	1.5	12	5	9	5.6	M5	M5x16	-	-	-
25			0	10	46	45	69	8	15	57	47	46	34	6.6	2	17	6	-	-	-	-	M5x16	-	-	-
STHWIC		30	+0.025	12.5	50	55	79	10	15	67	57	50	45	6.6	2	20	10	12	6.6	M6	M6x20	-	-	-	
		40	0	15	67	70	104	12	18	87	76	67	55	9	1.5	26	13	14	9	M8	M8x26	-	-	-	



Type	Round Flanged	Compact Flanged	Material	Surface Treatment	Accessory
With Dowel Holes	STHWIRBK	STHWICBK	EN 1.1191 Equiv.	Black Oxide	Hex Socket Head Cap Screw 1 pc.
	STHWIRK	STHWICK	EN 1.4301 Equiv.	Electroless Nickel Plating	Hex Socket Head Cap Screw 1 pc. (Stainless Steel)
	SSTHWIRK	SSTHWICK	EN 1.4301 Equiv.	-	-



Part Number	Type	DH7	Sleeve Thickness (N)	L	D1	H	T	B	P	W	P1	F	d	S	S1	X	Y	d1	d2	Q	M	Included Screw M x Length	Unit Price		
																							Round Flanged	Square Flanged	Compact Flanged
Round Flanged	STHWIRBK	12	+0.018	10	22	32	52	6	10	42	34	35	25	4.5	1.5	11	4	4	4	-	M5x12	-	-	-	
		16	0	9.5	30	35	56	6	12	46	37	37	27	5.5	1.5	12	5	9	5.6	5	M5	M5x12	-	-	-
Compact Flanged	STHWICBK	20	+0.021	10	32	40	64	8	12	52	42	43	30	6.6	1.5	14	6	-	-	-	-	M5x16	-	-	-
		25	0	10	38	45	69	8	15	57	47	46	34	6.6	2	17	6	-	-	-	-	M5x16	-	-	-
	STHWICK	30	+0.025	12.5	40	55	79	10	15	67	57	50	45	6.6	2	20	10	12	6.6	6	M6	M6x20	-	-	-

Ordering Example: Part Number STHWIR10 STHWIRBK25

Shaft Supports Flanged Mount

Compact Standard / Compact Long Sleeve / With Keyway

■ Features: O.D. (H Dimension) is smaller than the previous type. Space saving design.

■ Compact Standard

■ Compact Long Sleeve

Type	Material	Surface Treatment	Accessory
Standard	EN 1.1191	Black Oxide	Hex Socket Head Cap Screw 1 pc.
Long Sleeve	EN 1.4301 Equiv.	Electroless Nickel Plating	Hex Socket Head Cap Screw 1 pc. (Stainless Steel)

■ Compact Standard Type

■ Compact Long Sleeve Type

Part Number	Type	DH7	L	L1	H	B	T	T1	P	d1	d2	S	X	Y	M	d	R	Unit Price						
																		Round Flanged	Compact Flanged	Material	Surface Treatment			
Compact Standard	STHMRB	8	16	-	30	11	3.5	-	20	4.5	8	1.5	9.5	5	5	5.5	9							
	STHMR	10	-	34	12													22	10					
	STHMR	12	17	25	36													12	25	12				
	SSTHMR	15	28	38	13													26	13					
	SSTHMR	16	30	39	14													28	13.5	7				
Compact Long Sleeve (D12~30)	STHMRBL	20	22	34	49	14	6	-	40	6.6	11	2	16	8	6	6.6	12							
	STHMRBL	25	38	54	18													35	16					
	SSTHMRBL	25	38	54	18													35	16					
	SSTHMRBL	30	40	59	19													40	19					
	SSTHMRBL	30	40	59	22													45	22					

Ordering Example: Part Number STHMRB16, STHMR20, SSTHMR20

D	Unit Price					
	Compact Standard			Compact Long Sleeve		
8	STHMRB	STHMR	SSTHMR	STHMRBL	STHMRBL	SSTHMRBL
10						
12						
15						
16						
20						
25						
30						

■ O.D. Comparison Table

D (I.D.)	O.D. (H)		
	Compact Ex.) STHMR, STHMRBL	Flanged Mount with Slit Type P237 Ex.) STHWR, STHWRL	Difference
8	30	39	-9
10	34	49	-15
12	36	52	-16
15	38	56	-18
16	39	56	-17
20	49	64	-15
25	54	69	-15
30	59	79	-20

■ Features: Effective in preventing the shaft from rotating.

■ With Keyway

Type	Material	Surface Treatment	Accessory
Round Flanged	EN 1.1191	Black Oxide	Hex Socket Head Cap Screw 2 pcs.
Compact Flanged	EN 1.4301 Equiv.	Electroless Nickel Plating	Hex Socket Head Cap Screw 2 pcs. (Stainless Steel)

■ Round Flanged

■ Compact Flanged

Part Number	Type	DH7	Sleeve Thickness (N)	L	D1	H	T	B	P	W	P1	F	d	X	Y	d1	d2	M (Coarse)	Included Screw M x Length	Unit Price					
																				Round Flanged	Compact Flanged	Material	Surface Treatment		
Round Flanged	STHRBNG	12	+0.018	5	24	22	40	6	15	M4	32	25	28	16	4.5	4	±0.015	1.8	+0.1	2.3	0				
	STHRBNG	16	6	32	28	50	6	19	M4	40	32	33	22	5.5	5	±0.015	2.3	0							
	STHRBNG	20	+0.021	7.5	32	35	63	8	20	M5	50	40	42	25	6	6	±0.018	2.8	+0.2						
	STHRBNG	25	8	40	40	68	8	23	M5	55	45	45	30	6.6	8	±0.018	3.3	0							
	STHRBNG	30	10	45	73	10	24	M6	60	50	48	35	8	8	±0.018	3.3	0								

Ordering Example: Part Number STHRNG25

Alterations: Part Number STHRNG25 - MB, STHRNG30 - MB

For the details of Hex Socket Set Screw inclusion (MB), refer to Alterations on P234.

Shaft Supports Flanged Mount

Back Mount / Split

■ Features: Shafts can be fastened securely using tapped holes on shaft ends.

■ Back Mount

Type	Material	Surface Treatment	Accessory
Round Flanged	EN 1.1191 Equiv.	Black Oxide	Hex Socket Head Cap Screw 1 pc.
Compact Flanged	EN 1.4301 Equiv.	Electroless Nickel Plating	Hex Socket Head Cap Screw 1 pc. (Stainless Steel)

■ Round Flanged

■ Compact Flanged

Part Number	Type	DH7	Sleeve Thickness (N)	L	D1	H	T	B	P	W	P1	F	d	d1	d2	M (Coarse)	Included Screw M x Length	Unit Price						
																		Round Flanged	Compact Flanged	Material	Surface Treatment			
Round Flanged	STHXR10	8	+0.015	2	16	12	28	5	4.5	8	8	20	16	20	3.5	8	4.5	M4						
	STHXR10	10	0	2	20	14	30	5	5.5	10	10	22	18	22	3.5	9.5	5.5	M5						
	STHXR10	12	+0.018	0	2	24	16	36	6	6.5	11	13	26	20	26	4.5	11	6.6	M6					
	STHXR10	15	0	2.5	30	20	40	6	9	15	15	30	24	30	4.5	14	9	M8						
	STHXR10	16	0	3	32	22	42	8	9	16	16	32	26	28	16	14	9	M8						
	STHXR10	20	+0.021	0	4	38	28	50	8	11	18	20	39	32	31	22	18	11	M10					
	STHXR10	25	0	4	46	33	55	8	13	21	25	44	37	36	24	5.5	20	13	M12					
	STHXR10	30	0	4	58	38	66	8	13	28	30	52	42	41	27	6.6	24	13	M12					
	STHXR10	40	+0.025	0	7	70	54	88	10	17	30	40	72	62	62	38	9	26	17	M16				

Ordering Example: Part Number STHXR10

■ Features: Removable split sleeve makes maintenance easy.

■ Split

Type	Material	Surface Treatment	Accessory
Round Flanged	General Structural Steel	Black Oxide	Hex Socket Head Cap Screw 2 pcs.
Compact Flanged	EN 1.4301 Equiv.	Electroless Nickel Plating	Hex Socket Head Cap Screw 2 pcs. (Stainless Steel)

■ Round Flanged

■ Compact Flanged

Part Number	Type	D	Sleeve Thickness (N)	L	D1	H	T	B	P	W	P1	F	d	X	Y	d1	d2	M (Coarse)	Included Screw M x Length	Unit Price			
																				Round Flanged	Compact Flanged	Material	Surface Treatment
Round Flanged	STHPR10	8	+0.015	8.5	19	25	39	5	12	32	27	25	20	3.5	7.5	3.5	7.5	4.6	M4				
	STHPR10	10	0	10	21	30	49	5	14	40	32	33	23	4.5	10	3	9	5.6	M5				
	STHPR10	12	+0.018	0	10	23	32	52	6	15	42	34	35	25	11	4	9	5.6	M5				
	STHPR10	16	0	9.5	32	35	56	6	24	46	37	37	27	5.5	12	5	9	5.6	M5				
	STHPR10	20	+0.021	0	10	34	40	64	8	24	52	42	43	30	14	6	10	6.6	M6				

Ordering Example: Part Number STHPR10

Shaft Supports - T-Shaped (Cast)

Standard / Side Slit / Wide Side Slit

■ Features: Standard Type allows the shaft to be secured easily. Suitable when lengthwise space is limited.

■ Standard



RoHS

Type	Material	Surface Treatment	Accessory
SHTBT	EN 1.1191 Equiv.	Black Oxide	Hex Socket Head Cap Screw 1 pc.
SHTBM	EN 1.1191 Equiv.	Electroless Nickel Plating	Hex Socket Head Cap Screw 1 pc. (Stainless Steel)
SHTBS	EN 1.4301 Equiv.	-	Hex Socket Head Cap Screw 1 pc. (Stainless Steel)
SHTBA	EN AC-51300 Equiv.	Clear Anodize	-

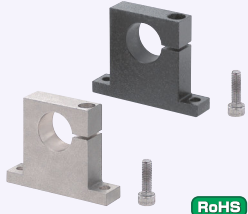


Cast Characters

Part Number Type	No.	D	H	L	H ₁	T	L ₁	d	L ₂	A	S	B ₁	B ₂	B ₃	Set Screw M	Mass g	Unit Price			
																	SHTBT	SHTBM	SHTBS	SHTBA
SHTBT SHTBM SHTBS SHTBA	815	8	15		24				18		6				M4	29 (10)				
	1020	10	20	42	30	10	32	5.5	20	21					M4	46 (16)				
	1220	12	20		32										M4	49 (17)				
	1320	13	20		32										M4	46 (16)				
	1625	16	25	48	40		38		25	24	8	14	8	2	M4	72 (25)				
	2025	20	25	60	43	16	45	6.6	30	30	10				M6	153 (53)				
	2030	20	30	70	48		56		35	35					M6	178 (62)				
	2530	25	30	84	53	20	64	9	44	42					M6	201 (70)				
3030	30	30												M8	314 (109)					

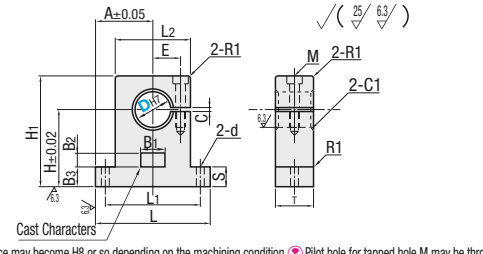
⚠ Values in () are the mass for aluminum products.

■ Side Slit



RoHS

Type	Material	Surface Treatment	Accessory
SHTCT	EN 1.1191 Equiv.	Black Oxide	Hex Socket Head Cap Screw 1 pc.
SHTCM	EN 1.1191 Equiv.	Electroless Nickel Plating	Hex Socket Head Cap Screw 1 pc. (Stainless Steel)
SHTCS	EN 1.4301 Equiv.	-	Hex Socket Head Cap Screw 1 pc. (Stainless Steel)
SHTCA	EN AC-51300 Equiv.	Clear Anodize	-




Cast Characters

Part Number Type	No.	D	H	L	H ₁	T	L ₁	d	L ₂	A	S	E	C	B ₁	B ₂	B ₃	Tightening Screw M	Mass g	Unit Price			
																			SHTCT	SHTCM	SHTCS	SHTCA
SHTCT SHTCM SHTCS SHTCA	815	8	15	52	22		40		28	26		9					M4	61 (21)				
	1020	10	20	54	29		42		30	27		10					M4	81 (28)				
	1220	12	20		31	12	44	5.5	32	28	6	11					M4	90 (31)				
	1320	13	20		31		44		32	28		11					M4	87 (30)				
	1625	16	25	58	37		46		34	29		12					M4	107 (37)				
	2025	20	25	79	40	16	64	6.5	49	39.5	8	17					M6	220 (76)				
	2030	20	30	79	45		64		49	39.5		18					M6	254 (88)				
	2530	25	30	102	48		82	9	62	51	10	18					M8	248 (86)				
3030	30	30															M8	477 (165)				

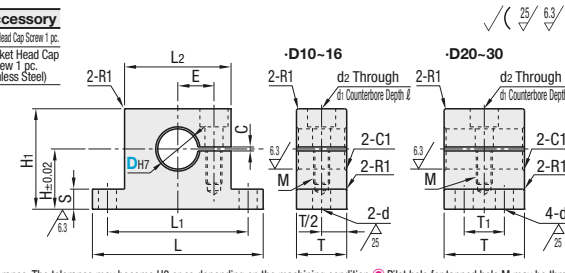
⚠ Values in () are the mass for aluminum products.

■ Wide Side Slit



RoHS

Type	Material	Surface Treatment	Accessory
SHTCTN	EN 1.1191 Equiv.	Black Oxide	Hex Socket Head Cap Screw 1 pc.
SHTCMN	EN 1.1191 Equiv.	Electroless Nickel Plating	Hex Socket Head Cap Screw 1 pc. (Stainless Steel)



Cast Characters

Part Number Type	D	H	L	H ₁	T	T ₁	L ₁	d	L ₂	S	E	C	Tightening Screw M	d ₁	d ₂	ℓ	Weight g	Unit Price	
																		SHTCTN	SHTCMN
SHTCTN SHTCMN	10												M6	11	6.6	6.5	181		
	12	20	62	30	20	-	50		38	6	12		M6	11	6.6	6.5	176		
	16	25		38	25								M6	11	6.6	6.5	264		
	20	30	85	48	30	15	70	6.6	58	8	20.5		M8	14	9	9	614		
	25	30											M8	14	9	9	574		
	30	30	110	53	40	20	90		70	10	24	3	M8	14	9	9	1038		

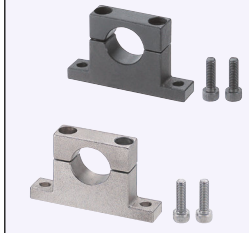
Ordering Example
Part Number
SHTBT3030
SHTCS2025
SHTCTN20

Shaft Supports - T-Shaped Split (Cast)

Standard / Wide

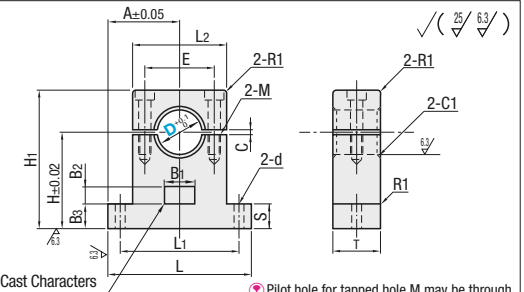
■ Features: Shaft Supports are removable and thus, facilitate maintenance. Wide Type has a long shaft holding section and has enhanced gripping power.

■ Standard



RoHS

Type	Material	Surface Treatment	Accessory
SHTDT	EN 1.1191 Equiv.	Black Oxide	Hex Socket Head Cap Screw 2 pcs.
SHTDM	EN 1.1191 Equiv.	Electroless Nickel Plating	Hex Socket Head Cap Screw 2 pcs. (Stainless Steel)
SHTDA	EN AC-51300 Equiv.	Clear Anodize	Hex Socket Head Cap Screw 2 pcs. (Stainless Steel)



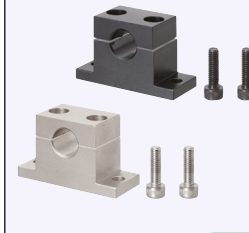
Cast Characters

⚠ Pilot hole for tapped hole M may be through.

Part Number Type	No.	D	H	L	H ₁	T	L ₁	d	L ₂	A	S	E	C	B ₁	B ₂	B ₃	Tightening Screw M	Mass g	Unit Price			
																			SHTDT	SHTDM	SHTDA	
SHTDT SHTDM SHTDA	815	8	15	52	22		40		28	26		18					M4	58 (20)				
	1020	10	20	54	29		42		30	27		20					M4	78 (27)				
	1220	12	20		31	12	44	5.5	32	28	6	22					M4	87 (30)				
	1320	13	20		31		44		32	28		22					M4	84 (29)				
	1625	16	25	58	37		46		34	29		24					M4	104 (36)				
	2025	20	25	79	40	16	64	6.5	49	39.5	8	34					M6	214 (74)				
	2030	20	30	79	45		64		49	39.5		36					M6	249 (86)				
	2530	25	30	102	48		82	9	62	51	10	36					M6	243 (84)				
	3030	30	30															M8	463 (160)			

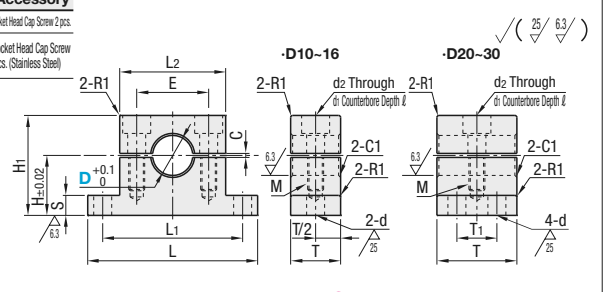
⚠ Values in () are the mass for aluminum products.

■ Wide Split



RoHS

Type	Material	Surface Treatment	Accessory
SHTDTN	EN 1.1191 Equiv.	Black Oxide	Hex Socket Head Cap Screw 2 pcs.
SHTDMN	EN 1.1191 Equiv.	Electroless Nickel Plating	Hex Socket Head Cap Screw 2 pcs. (Stainless Steel)



Cast Characters

⚠ Pilot hole for tapped hole M may be through.

Part Number Type	D	H	L	H ₁	T	T ₁	L ₁	d	L ₂	S	E	C	Tightening Screw M	d ₁	d ₂	ℓ	Mass g	Unit Price	
																		SHTDTN	SHTDMN
SHTDTN SHTDMN	10												M6	11	6.6	6.5	177		
	12	20	62	30	20	-	50		38	6	24		M6	11	6.6	6.5	172		
	16	25		38	25								M6	11	6.6	6.5	260		
	20	30	85	48	30	15	70	6.6	58	8	41		M8	14	9	9	605		
	25	30											M8	14	9	9	566		
	30	30	110	53	40	20	90		70	10	48	3	M8	14	9	9	1019		

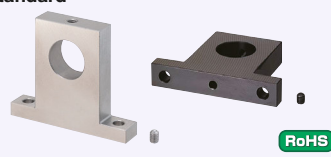
Ordering Example
Part Number
SHTDT1320
SHTDA2030
SHTDMN25

Shaft Supports T-Shaped Set Screw (Machined)

Standard / Wide

■ Features: Dowel Hole Type enables easy positioning in assembly.

Standard

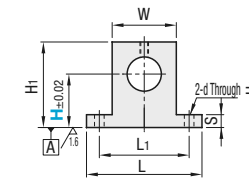


RoHS

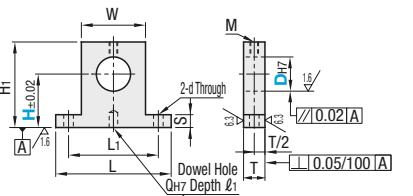
Assembly Examples **P.232**

25 / (6.3 / 1.5)

· W/o Dowel Hole



· With Dowel Hole



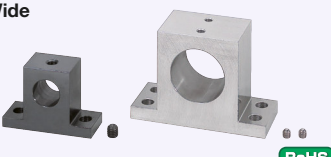
W/o Dowel Hole		With Dowel Hole		Material	Surface Treatment	Accessory
Height H Selectable	Height H Configurable	Height H Selectable	Height H Configurable			
SHTB	SHTBH/SHTBK	EN 1.1191	Black Oxide	Hex Socket Set Screw 1 pc.		
SHTM	SHTMH/SHTMK	Equiv.	Electroless Nickel Plating			
SHTS	SHTSH/SHTSK	EN 1.4301	-	Hex Socket Set Screw 1 pc. (Stainless Steel)		
SHTA	SHTAH	EN AW-6063	Clear Anodize			

Part Number	H		L	H ₁	T	S	W	Set Screw M	L ₁	d	Q	ℓ ₁	Unit Price					
													W/o Dowel Hole			With Dowel Hole		
													Height H Selectable Type	Height H Configurable Type	Height H Selectable Type	Height H Configurable Type	Height H Selectable Type	Height H Configurable Type
W/o Dowel Hole	3	10 15 20	26	H+5	8	4	10	M3	18	3.5	-	-	SHTB	SHTBH	SHTBK	-	-	-
	4	15 20 25		H+6									SHTM	SHTMH	SHTMK	-	-	-
Height H Selectable	5	15 20 25	42	H+7	10	6	18	M4	30	4.5	4	5	SHTS	SHTSH	SHTSK	-	-	-
	6	20 25 30		H+8									SHTA	SHTAH	SHTAK	-	-	-
	8	25 30 40		H+9									SHTB	SHTBH	SHTBK	-	-	-
	10	30 40 50		H+10									SHTM	SHTMH	SHTMK	-	-	-
	12	40 50 60		H+11									SHTS	SHTSH	SHTSK	-	-	-
	15	50 60 80		H+12									SHTA	SHTAH	SHTAK	-	-	-
Height H Configurable	13	20 25 30	54	H+15	16	8	35	M6	50	6.6	5	7	SHTB	SHTBH	SHTBK	-	-	-
	15	25 30 40		H+18									SHTM	SHTMH	SHTMK	-	-	-
	16	30 40 50		H+20									SHTS	SHTSH	SHTSK	-	-	-
	18	40 50 60		H+23									SHTA	SHTAH	SHTAK	-	-	-
	20	50 60 80		H+25									SHTB	SHTBH	SHTBK	-	-	-
	25	60 80 100		H+30									SHTM	SHTMH	SHTMK	-	-	-
With Dowel Hole	25	20 25 30 40 50 60	85	H+20	20	10	45	M6	65	9	5	7	SHTS	SHTSH	SHTSK	-	-	-
	30	25 30 40 50 60		H+23									SHTA	SHTAH	SHTAK	-	-	-
	35	30 40 50 60		H+25									SHTB	SHTBH	SHTBK	-	-	-
	40	40 50 60 80		H+30									SHTM	SHTMH	SHTMK	-	-	-
	50	50 60 80 100		H+38									SHTS	SHTSH	SHTSK	-	-	-
	80	80 100 125		H+50									SHTA	SHTAH	SHTAK	-	-	-

Ⓜ H dimensions in () are applicable to w/o Dowel Hole Type only. Ⓜ Dowel Hole Type is applicable to D dimensions 8 ~ 40 only.

■ Features: T dimension is thicker in comparison to Standard Type (I.D. D x 1 ~ 1.5). Aluminum products are suitable for weight saving.

Wide

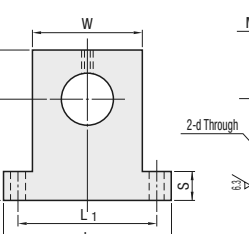


RoHS

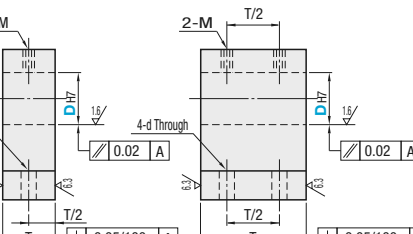
Assembly Examples **P.232**

25 / (6.3 / 1.5)

· D8-25



· D30-50



Type	Material	Surface Treatment	Accessory
SHTBN	EN 1.1191	Black Oxide	Hex Socket Head Cap Screw 1 pc.
SHTMN	Equiv.	Electroless Nickel Plating	Hex Socket Head Cap Screw 1 pc. (Stainless Steel)
SHTSN	EN 1.4301	-	Hex Socket Head Cap Screw 1 pc. (Stainless Steel)
SHTAN	EN AW-6063	Clear Anodize	-

Ⓜ D dimensions 30 ~ 50 come with 2 screws.

Part Number	H Selection		L	H ₁	T	S	W	Set Screw M	L ₁	d	Unit Price		
											SHTBN	SHTMN	SHTSN
SHTBN SHTMN SHTSN	8	10 15 20 25 30 40	42	H+9	15	6	18	M6	30	6.6	-	-	-
	10	15 20 25 30 40 50 60		H+10							-	-	-
	12	20 25 30 40 50 60		H+11							-	-	-
	13	15 20 25 30 40 50 60	54	H+12	18	6	30	M6	42	6.6	-	-	-
	15	20 25 30 40 50 60		H+15							-	-	-
	16	25 30 40 50 60		H+15							-	-	-
	20	20 25 30 40 50 60 80	67	H+18	25	8	35	M8	50	9	-	-	-
	25	25 30 40 50 60 80		H+20							-	-	-
	30	30 40 50 60 80		H+23							-	-	-
	35	25 30 40 50 60 80	85	H+25	35	10	45	M8	65	6.6	-	-	-
	40	30 40 50 60 80		H+30							-	-	-
	50	40 50 60 80		H+38							-	-	-

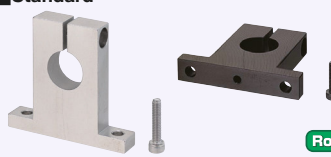
Ordering Example: Part Number - H
SHTB8 - 25
SHTMH15 - 25.6
SHTBN35 - 50

Shaft Supports T-Shaped Slit (Machined)

Standard / Wide

■ Features: Dowel Hole Type enables easy positioning in assembly. High locating repeatability on assembly for maintenance.

Standard

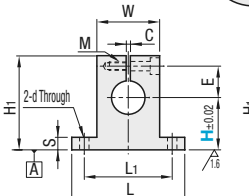


RoHS

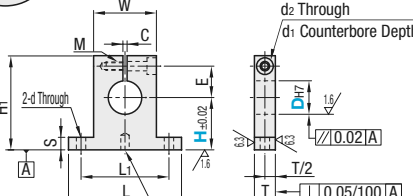
Assembly Examples **P.232**

25 / (6.3 / 1.5)

· W/o Dowel Hole



· With Dowel Hole



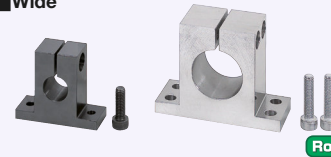
W/o Dowel Hole		With Dowel Hole		Material	Surface Treatment	Accessory
Height H Selectable	Height H Configurable	Height H Selectable	Height H Configurable			
SHSTB	SHSTBH/SHSTBK	EN 1.1191	Black Oxide	Hex Socket Head Cap Screw 1 pc.		
SHSTM	SHSTMH/SHSTMK	Equiv.	Electroless Nickel Plating			
SHSTA	SHSTAH	EN 1.4301	-	Hex Socket Head Cap Screw 1 pc. (Stainless Steel)		
SHSTD	SHSTDH	Aluminum Alloy 6000 series	Black Anodize			

Ⓜ Slit is machined after the mounting hole D is bored to H₇ tolerance. The tolerance may become H₈ or so depending on the machining condition.

Part Number	H		L	H ₁	T	S	W	L ₁	d	E	Tightening Screw M	d ₂	d ₁	ℓ	C	Q	ℓ ₁	Unit Price								
																		W/o Dowel Hole			With Dowel Hole					
																		Height H Selectable Type	Height H Configurable Type	Height H Selectable Type	Height H Configurable Type	Height H Selectable Type	Height H Configurable Type			
W/o Dowel Hole	3	10 15 20	26	H+11	8	4	10	18	3.5	7	M3	3.5	6.5	3.5	1.5	-	-	-	-	-						
	4	15 20 25		H+12																	SHTB	SHSTBH	SHSTBK	-	-	-
Height H Selectable	5	15 20 25	42	H+16	10	6	18	30	4.5	11	M4	4.5	8	4.5	4	5	-	-	-	-						
	6	20 25 30		H+18																	SHTM	SHSTMH	SHSTMK	-	-	-
	8	25 30 40		H+20																	SHTS	SHSTSH	SHSTSK	-	-	-
	10	30 40 50		H+26																	SHTA	SHSTAH	SHSTAK	-	-	-
	12	40 50 60		H+28																	SHTB	SHSTBH	SHSTBK	-	-	-
	15	50 60 80		H+33																	SHTM	SHSTMH	SHSTMK	-	-	-
Height H Configurable	13	20 25 30	54	H+26	16	8	35	50	6.6	18	M6	6.6	11	6.5	5	7	-	-	-	-						
	15	25 30 40		H+28																	SHTS	SHSTSH	SHSTSK	-	-	-
	16	30 40 50		H+33																	SHTA	SHSTAH	SHSTAK	-	-	-
	18	40 50 60		H+36																	SHTB	SHSTBH	SHSTBK	-	-	-
	20	50 60 80		H+38																	SHTM	SHSTMH	SHSTMK	-	-	-
	25	60 80 100		H+51																	SHTS	SHSTSH	SHSTSK	-	-	-
With Dowel Hole	25	20 25 30 40 50 60	85	H+33	20	10	45	65	9	24	M8	9	14	9	3	-	-	-	-	-						
	30	25 30 40 50 60		H+36																	SHTB	SHSTBH	SHSTBK	-	-	-
	35	30 40 50 60		H+38																	SHTM	SHSTMH	SHSTMK	-	-	-
	40	40 50 60 80		H+51																	SHTS	SHSTSH	SHSTSK	-	-	-
	50	50 60 80		H+51																	SHTA	SHSTAH	SHSTAK	-	-	-
	80	80 100 125		H+51																	SHTB	SHSTBH	SHSTBK	-	-	-

Ⓜ H dimensions in () are applicable to w/o Dowel Hole Type only. Ⓜ Dowel Hole Type is applicable to D dimensions 8 ~ 50 only.

Wide

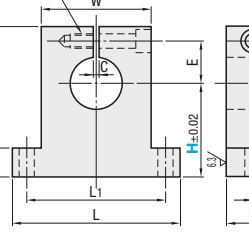


RoHS

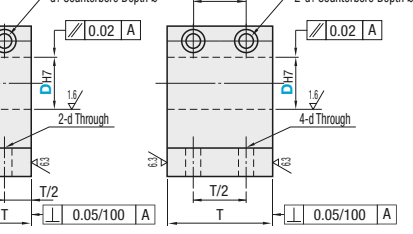
Assembly Examples **P.232**

25 / (6.3 / 1.5)

· D8-25



· D30-50



Type	Material	Surface Treatment	Accessory
SHSTBN	EN 1.1191	Black Oxide	Hex Socket Head Cap Screw 1 pc.
SHSTMN	Equiv.	Electroless Nickel Plating	Hex Socket Head Cap Screw 1 pc. (Stainless Steel)
SHSTSN	EN 1.4301	-	Hex Socket Head Cap Screw 1 pc. (Stainless Steel)
SHSTAN	EN AW-6063	Clear Anodize	-

Ⓜ D dimensions 30 ~ 50 come with 2 screws.

Ⓜ Slit is machined after the mounting hole D is bored to H₇ tolerance. The tolerance may become H₈ or so depending on the machining condition.

Part Number	H Selection		L	H ₁	T	S	W	L ₁	d	E	Tightening Screw M	d ₂	d ₁	ℓ	C	Unit Price						
																SHSTBN	SHSTMN	SHSTSN	SHSTAN			
SHSTBN SHSTMN SHSTSN SHSTAN	8	10 15 20 25 30 40	48	H+18	15	6	24	36	6.6	14	M6	6.6	11	6.5	2	-	-	-	-			
	10	15 20 25 30 40 50 60		H+19												-	-	-				
	12	20 25 30 40 50 60		H+21												-	-	-				
	13	15 20 25 30 40 50 60	54	H+23	20	6	30	42	16	16	16	M8	9	14	9	-	-	-	-			
	15	20 25 30 40 50 60		H+29																-	-	-
	16	25 30 40 50 60		H+31																-	-	-
	20	20 25 30 40 50 60 80	67	H+29	25	8	35	50	9	19	22	M8	9	14	9	-	-	-	-			
	25	25 30 40 50 60 80		H+31																-	-	-
	30	30 40 50 60 80		H+33																-	-	-
	35	25 30 40 50 60 80	85	H+36	35	10	45	65	6.6	24	27	M8	9	14	9	-	-	-	-			
	40	30 40 50 60 80		H+38																-	-	-
	50	40 50 60 80		H+51																-	-	-

Ordering Example: Part Number - H
SHSTM8 - 25
SHSTMH8 - 25.6
SHSTMN20 - 30

Shaft Supports Compact Type (Machined)

Set Screw / Wide Set Screw / Side Slit / Split / Wide Split

■Features: Space-saving compact type. L dimensions are more compact than the conventional T-Shaped Type. (Refer to Size Comparison Table on the next page.)

■Set Screw

Type	Material	Surface Treatment	Accessory
SHMTB	EN 1.1191	Black Oxide	Hex Socket Set Screw 1 pc.
SHMTM	EN 1.4301	Electroless Nickel Plating	Hex Socket Set Screw 1 pc. (Stainless Steel)
SHMTS	EN 1.4301	-	Hex Socket Set Screw 1 pc. (Stainless Steel)

RoHS Refer to the comparison table on the next page.

Part Number Type	D	H Selection			L	H ₁	T	L ₁	d	d ₁	l	Set Screw M	Unit Price		
		5	10	15									SHMTB	SHMTM	SHMTS
SHMTB SHMTM SHMTS	6	5	10	15	24	H+8	10	14				M4			
	8	10	15	20	26	H+9		16							
	10	10	15	20		H+10									
	12	10	15	20	32	H+11	12	20	4.5	8	4.5				
	15	15	20	25		H+15		23							
	16	15	20	25	34	H+15									
	20	15	20	25	50	H+18	16	34	6.6	11	6.5		M6		
	25	20	25	30		H+20		36							
	30	20	25	30	70	H+23		48							
	35	25	30	35		H+25	22	48	9	14	9				
40	25	30	35	76	H+30		58								

■Wide Set Screw

Type	Material	Surface Treatment	Accessory
SHMTBN	EN 1.1191	Black Oxide	Hex Socket Set Screw 1 pc.
SHMTMN	EN 1.4301	Electroless Nickel Plating	Hex Socket Set Screw 1 pc. (Stainless Steel)
SHMTSN	EN 1.4301	-	Hex Socket Set Screw 1 pc. (Stainless Steel)

RoHS

Part Number Type	D	H Selection			L	H ₁	T	L ₁	d	d ₁	l	Set Screw M	Unit Price		
		10	15	20									SHMTBN	SHMTMN	SHMTSN
SHMTBN SHMTMN SHMTSN	8	10	15	20	34	H+9	15	20				M6			
	10	10	15	20	36	H+10		22							
	12	10	15	20	38	H+11	18	24	6.6	11	6.5				
	15	15	20	25		H+15		28							
	16	15	20	25	42	H+15									
	20	15	20	25	54	H+18	25	36	9	14	9		M8		
	25	20	25	30		H+20		42							
	30	20	25	30	74	H+23		52							
	35	25	30	35		H+26	35	56	11	17.5	11		M10		
	40	25	30	35	80	H+30		58							

■Side Slit

Type	Material	Surface Treatment
SHMWB	EN 1.1191	Black Oxide
SHMWM	EN 1.4301	Electroless Nickel Plating
SHMWS	EN 1.4301	-

RoHS

Part Number Type	D	H Selection			L	H ₁	T	L ₁	d	d ₁	l	C	Unit Price		
		5	10	15									SHMWB	SHMWM	SHMWS
SHMWB SHMWM SHMWS	6	5	10	15	24	H+7	10	15				2			
	8	10	15	20	26	H+7		17							
	10	10	15	20		H+9		22	4.5	8	4.5				
	12	10	15	20	32	H+10	12	22							
	15	15	20	25		H+11.5		24							
	16	15	20	25	34	H+11.5									
	20	15	20	25	50	H+17	16	34	6.6	11	6.5		3		
	25	20	25	30		H+19.5		36							
	30	20	25	30	70	H+23		48							
	35	25	30	35		H+25	22	48	9	14	9				
40	25	30	35	76	H+30		58								

■Features: Space-saving compact type. Height (H) and L dimensions are more compact than the conventional Split Type. (Refer to Size Comparison Table below.)

■Split

Type	Material	Surface Treatment
SHMPB	EN 1.1191	Black Oxide
SHMPBK	EN 1.1191	Black Oxide
SHMPM	EN 1.4301	Electroless Nickel Plating
SHMPMK	EN 1.4301	Electroless Nickel Plating
SHMPS	EN 1.4301	-
SHMPSK	EN 1.4301	-

■Features: Dowel Hole Type enables easy positioning and assembly.

RoHS Refer to Size Comparison Table below.

Part Number Type	D	H Selection			L	H ₁	T	L ₁	d	d ₁	l	Q	P	l ₁	C	Unit Price					
		6	10	15												SHMPB	SHMPM	SHMPS	SHMPBK	SHMPMK	SHMPSK
(W/o Dowel Hole)	6	10	15	20	24	H+7	10	14				-	5								
	8	10	15	20	26	H+7		16					8	5							
	10	10	15	20	32	H+10	12	20	4.5	8	4.5	3									
	12	10	15	20		H+12		23													
	15	15	20	25	34	H+12															
	16	15	20	25	50	H+15	16	34	6.6	11	6.5	4	16	7							
(With Dowel Hole)	20	15	20	25		H+20		36				20									
	25	20	25	30	70	H+20		48	9	14	9	28	8	3							
	30	20	25	30		H+25	22	48													
	35	25	30	35	76	H+25		56													

H dimensions in () are applicable to w/o Dowel Hole Type only. Ⓞ6 is not available for Dowel Hole Type.

■Wide Split

Type	Material	Surface Treatment
SHMPBN	EN 1.1191	Black Oxide
SHMPMN	EN 1.4301	Electroless Nickel Plating
SHMPSN	EN 1.4301	-

RoHS

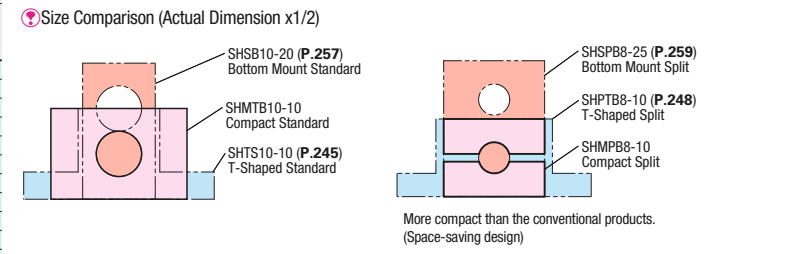
Part Number Type	D	H Selection			L	H ₁	T	L ₁	d	d ₁	l	C	Unit Price		
		10	15	20									SHMPBN	SHMPMN	SHMPSN
SHMPBN SHMPMN SHMPSN	8	10	15	20	34	H+10	15	20				2			
	10	10	15	20	36	H+10		22							
	12	10	15	20	38	H+11	18	24	6.6	11	6.5				
	15	15	20	25		H+12		28							
	16	15	20	25	42	H+12									
	20	15	20	25	54	H+15	25	36	9	14	9				
	25	20	25	30		H+20		42							
	30	20	25	30	74	H+20		52							
	35	25	30	35		H+25	35	56	11	17.5	11				
	40	25	30	35	80	H+25		58							

Ordering Example: Part Number - H
SHMPB8 - 10
SHMPSN40 - 30

Example: SHMPSN40 - 30

■Size Comparison Table

D	L Dimension		
	Compact Standard	T-Shaped Standard P205	Difference
6	24	26	-2
8	26	42	-16
10	32	42	-10
12	32	42	-10
15	34	54	-20
16	34	54	-20
20	50	67	-17
25	50	67	-17
30	70	85	-15
35	70	85	-15
40	76	100	-24



Shaft Supports - L-Shaped (Cast)

Standard / Slit

Shaft Supports - L-Shaped (Cast)

Side Slit / Split

Features : Cast manufacturing enabled more economical prices than the other machined products of the same type.

Standard

Type	Material	Surface Treatment	Accessory
SHKLB	EN 1.1191	Black Oxide	Hex Socket Set Screw 1 pc.
SHKLM	Equiv.	Electroless Nickel Plating	Hex Socket Set Screw 1 pc.
SHKLS	EN 1.4301	-	Hex Socket Set Screw 1 pc. (Stainless Steel)

Cast Character (Back Side)

RoHS

Part Number Type	D	H	L	H1	T	S	W	W1	A	Tightening Screw M	L1	d	B1	B2	B3	Mass g	Unit Price		
																	SHKLB	SHKLM	SHKLS
SHKLB SHKLM SHKLS	8	15		24					12.5	M4	13	5.5		7		60			
	10	20	25	30	10	6	20	15								72			
	12			31												71			
	16			38												79			
	20	25	40	43		8	26	18	20	M6	24	6.5		8	2	209			
	25			50												222			
30	30	50	53	12	10	30	20	25		30	9				369				

Features : Cast manufacturing enabled more economical prices than the other machined products of the same type.

Side Slit

Type	Material	Surface Treatment	Accessory
SHKWBT	EN 1.1191	Black Oxide	Hex Socket Set Screw 1 pc.
SHKWM	Equiv.	Electroless Nickel Plating	Hex Socket Set Screw 1 pc.
SHKWS	EN 1.4301	-	Hex Socket Set Screw 1 pc. (Stainless Steel)

Cast Character (Back Side)

RoHS

Part Number Type	D	H	L	H1	T	S	W	W1	A	L1	d	E	Tightening Screw M	d2	d1	ℓ	C	B1	B2	B3	Mass g	Unit Price		
																						SHKWBT	SHKWM	SHKWS
SHKWBT SHKWM SHKWS	8	15	30	23					15				M4	4.5	8	4.5			7		70			
	10	20	32	29	12	6	22	17	16	20	5.5	10					2	14	8	2	90			
	12			30																	90			
	16			37						19	26		13								127			
	20	25	40	40	16	8	32	24	25	36	6.5	18	M6	6.5	11	6.5					243			
	25			48																	271			
30	30	70	51	20	10	40	30	35	48	9	24	M8	9	14	9	3				503				

Slit Type

Type	Material	Surface Treatment	Accessory
SHKSB	EN 1.1191	Black Oxide	Hex Socket Head Cap Screw 1 pc.
SHKSM	Equiv.	Electroless Nickel Plating	Hex Socket Head Cap Screw 1 pc.
SHKSS	EN 1.4301	-	Hex Socket Head Cap Screw 1 pc. (Stainless Steel)

Cast Character (Back Side)

RoHS

Part Number Type	D	H	L	H1	T	S	W	W1	A	L1	d	E	Tightening Screw M	d2	d1	ℓ	C	B1	B2	B3	Mass g	Unit Price		
																						SHKSB	SHKSM	SHKSS
SHKSB SHKSM SHKSS	8	15		31					12.5				M4	4.5	8	4.5			7		72			
	10	20	25	36	12	6	22	17													82			
	12			38																	83			
	16			45					15												114			
	20	25	40	51	16	8	32	24	20	24	6.5	18	M6	6.5	11	6.5					236			
	25			58								21									249			
30	30	50	63	20	10	40	30	25	30	9	24	M8	9	14	9	3				417				

Split Type

Type	Material	Surface Treatment	Accessory
SHKPB	EN 1.1191	Black Oxide	Hex Socket Head Cap Screw 2 pcs.
SHKPM	Equiv.	Electroless Nickel Plating	Hex Socket Head Cap Screw 2 pcs.
SHKPS	EN 1.4301	-	Hex Socket Head Cap Screw 2 pcs. (Stainless Steel)

Cast Character (Back Side)

RoHS

Part Number Type	D	H	L	H1	T	S	W	W1	A	L1	d	E	Tightening Screw M	d2	d1	ℓ	C	B1	B2	B3	Mass g	Unit Price		
																						SHKPB	SHKPM	SHKPS
SHKPB SHKPM SHKPS	8	15	30	23					15				M4	4.5	8	4.5			7		65			
	10	20	32	29	12	6	22	17	16	20	5.5	20									85			
	12			30																	85			
	16			37						19	26		26								121			
	20	25	40	40	16	8	32	24	25	36	6.5	36	M6	6.5	11	6.5					230			
	25			48																	257			
30	30	70	51	20	10	40	30	35	48	9	48	M8	9	14	9	3				483				

Ordering Example
Part Number
SHKSBT8


Ordering Example
Part Number
SHKWBT12

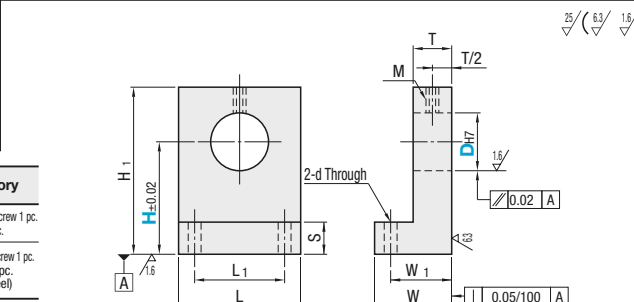
Shaft Supports L-Shaped (Machined)

Standard / Slit

■ **Features :** Suitable when crosswise space is limited. For Standard Type, the most economical price is placed. For Slit Type, the shafts can be secured without damage.

■ **Standard**



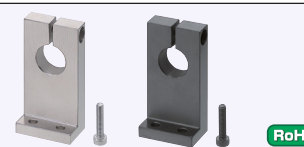


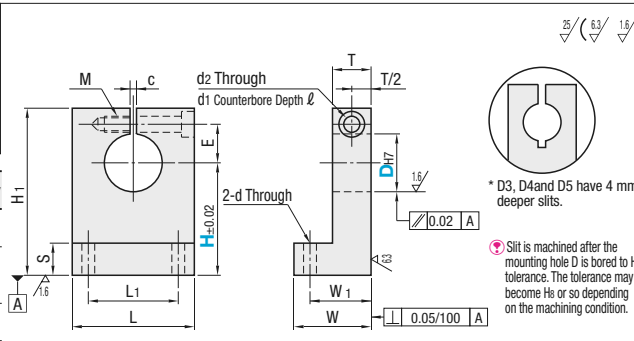
RoHS

Height H Selectable Type	Height H Configurable Type	Material	Surface Treatment	Accessory
SHKLB	SHKLBH	EN 1.1191 Equiv.	Black Oxide	Hex Socket Head Cap Screw 1 pc. Set Screw 1 pc.
SHKLM	SHKLMH	EN 1.4301 Equiv.	Electroless Nickel Plating	Hex Socket Head Cap Screw 1 pc. Set Screw 1 pc. (Stainless Steel)
SHKLS	SHKLSH	EN AW-6063 Equiv.	Clear Anodize	Hex Socket Head Cap Screw 1 pc. (Stainless Steel)
SHKLA	SHKLAH			

Part Number	H										Unit Price																				
	Type	D	Height H Selectable Type	Height H Configurable Type	L	H ₁	T	S	W	W ₁	Set Screw M	L ₁	d	Height H Selectable Type	Height H Configurable Type	SHKLB	SHKLM	SHKLS	SHKLA	SHKLBH	SHKLMH	SHKLSH	SHKLAH								
Height H Selectable Type	3	10	15	20	20	H+5	6	4	14	10	M3	10	3.6																		
	4	10	15	20		H+6																									
	5	15	20	25		H+7																									
	6	15	20	25		H+8																									
	8	15	20	25		H+9																									
Height H Configurable Type	8	15	20	25	30	40	25	8	6	18	13	M4	13	4.5																	
	10	20	25	30	40	H+10																									
	12	20	25	30	40	H+11																									
	13	20	25	30	40	H+12																									
	16	20	25	30	40	H+13																									
	20	25	30	40	50	60									H+18	40	10	8	26	18	M6	24	6.6								
	25	30	40	50	60	H+20																									
	30	35	40	50	60	H+23																									
	35	40	50	60	H+25																										
	40	40	50	60	80	H+30																									
50	50	60	80	H+38																											

■ **Slit Type**





RoHS

Height H Selectable Type	Height H Configurable Type	Material	Surface Treatment	Accessory
SHKSB	SHKSBH	EN 1.1191 Equiv.	Black Oxide	Hex Socket Head Cap Screw 1 pc.
SHKSM	SHKSMH	EN 1.4301 Equiv.	Electroless Nickel Plating	Hex Socket Head Cap Screw 1 pc. (Stainless Steel)
SHKSS	SHKSSH	EN 1.4301 Equiv.	-	Hex Socket Head Cap Screw 1 pc. (Stainless Steel)
SHKSA	SHKSAH	Aluminum Alloy 6000 series	Clear Anodize	Hex Socket Head Cap Screw 1 pc.
SHKSD			Black Anodize	Hex Socket Head Cap Screw 1 pc.

* D3, D4 and D5 have 4 mm deeper slits.
 ⚠ Slit is machined after the mounting hole D is bored to H₁ tolerance. The tolerance may become H₂ or so depending on the machining condition.

Part Number	H										Unit Price																								
	Type	D	Height H Selectable Type	Height H Configurable Type	L	H ₁	T	S	W	W ₁	Set Screw M	L ₁	d	Height H Selectable Type	Height H Configurable Type	SHKSB	SHKSM	SHKSS	SHKSA	SHKSD	SHKSBH	SHKSMH	SHKSSH	SHKSAH											
Height H Selectable Type	3	10	15	20	20	H+11	8	4	16	12	12	3.5	7	M3	3.5	6.5	3.5	1.5																	
	4	10	15	20		H+12																													
	5	15	20	25		H+16																													
	6	15	20	25		H+18																													
	8	15	20	25		H+20																													
Height H Configurable Type	8	15	20	25	30	40	25	10	6	20	15	4.5	11	M4	4.5	8	4.5	2																	
	10	20	25	30	40	H+16																													
	12	20	25	30	40	H+18																													
	13	20	25	30	40	H+20																													
	16	20	25	30	40	H+22																													
	20	25	30	40	50	60													H+26	40	16	8	32	24	6.6	M6	6.6	11	6.5						
	25	30	40	50	60	H+28																													
	30	35	40	50	60	H+33																													
	35	40	50	60	H+36																														
	40	40	50	60	80	H+38																													
50	50	60	80	H+51																															


Ordering Example: Part Number - H
 SHKLM8 - 25
 SHKLMH8 - 25.6

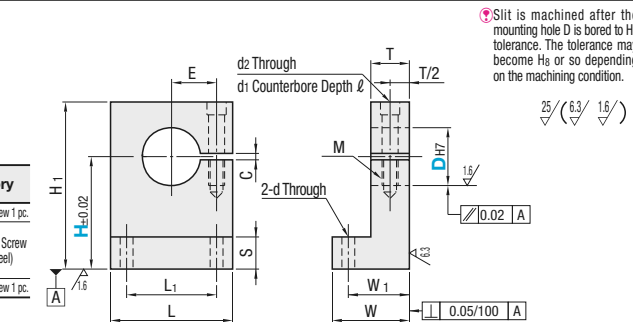
Shaft Supports L-Shaped (Machined)

Side Slit / Split

■ **Features:** Suitable when crosswise space is limited. Side Slit Type allows each screw to be fixed from above. Split Type facilitates maintenance.

■ **Side Slit**





RoHS


Height H Selectable Type	Height H Configurable Type	Material	Surface Treatment	Accessory
SHKWB	SHKWBH	EN 1.1191 Equiv.	Black Oxide	Hex Socket Head Cap Screw 1 pc.
SHKWM	SHKWMH	EN 1.4301 Equiv.	Electroless Nickel Plating	Hex Socket Head Cap Screw 1 pc. (Stainless Steel)
SHKWS	SHKWSH	EN AW-6063 Equiv.	Clear Anodize	Hex Socket Head Cap Screw 1 pc.
SHKWA	SHKWAH		Black Anodize	Hex Socket Head Cap Screw 1 pc.
SHKWD				

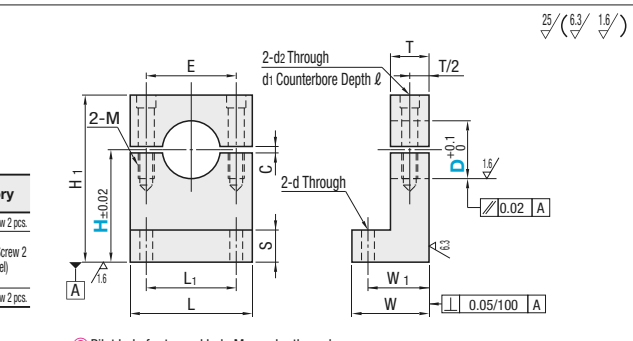
⚠ Slit is machined after the mounting hole D is bored to H₁ tolerance. The tolerance may become H₂ or so depending on the machining condition.

⚠ Pilot hole for tapped hole M may be through.

Part Number	H										Unit Price														
	Type	D	Height H Selectable Type	Height H Configurable Type	L	H ₁	T	S	W	W ₁	Set Screw M	L ₁	d	Height H Selectable Type	Height H Configurable Type	SHKWB	SHKWM	SHKWS	SHKWA	SHKWD	SHKWBH	SHKWMH	SHKWSH	SHKWAH	
Height H Selectable Type	8	15	20	25	30	40	32	10	6	22	16	22	4.5	11	M4	4.5	8	4.5	2						
	10	20	25	30	40	H+9																			
	12	20	25	30	40	H+10																			
	13	20	25	30	40	H+11																			
	16	20	25	30	40	H+13																			
Height H Configurable Type	20	25	30	40	50	60	50	16	8	32	24	36	6.5	17	M6	6.6	11	6.5	3						
	25	30	40	50	60	H+15																			
	30	30	40	50	60	H+18																			
	35	40	50	60	80	H+21																			
	40	40	50	60	80	H+24																			
	50	50	60	80	H+27																				

■ **Split**





RoHS

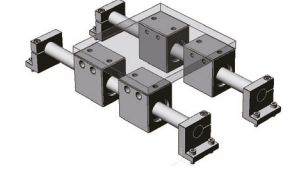
Height H Selectable Type	Height H Configurable Type	Material	Surface Treatment	Accessory
SHKPB	SHKPBH	EN 1.1191 Equiv.	Black Oxide	Hex Socket Head Cap Screw 2 pcs.
SHKPM	SHKPMH	EN 1.4301 Equiv.	Electroless Nickel Plating	Hex Socket Head Cap Screw 2 pcs. (Stainless Steel)
SHKPS	SHKPSH	EN AW-6063 Equiv.	Clear Anodize	Hex Socket Head Cap Screw 2 pcs.
SHKPA	SHKPAH		Black Anodize	Hex Socket Head Cap Screw 2 pcs.
SHKPD				

⚠ Pilot hole for tapped hole M may be through.

Part Number	H										Unit Price																								
	Type	D	Height H Selectable Type	Height H Configurable Type	L	H ₁	T	S	W	W ₁	Set Screw M	L ₁	d	Height H Selectable Type	Height H Configurable Type	SHKPB	SHKPM	SHKPS	SHKPA	SHKPD	SHKPBH	SHKPMH	SHKPSH	SHKPAH											
Height H Selectable Type	3	10	15	20	22	H+6	8	4	16	12	13	3.5	13	M3	3.5	6.5	3.5	1.5																	
	4	10	15	20															H+7																
	5	15	20	25															H+10																
	6	15	20	25															H+12																
	8	15	20	25															H+16																
Height H Configurable Type	8	15	20	25	30	40	30	10	6	20	15	20	4.5	M4	4.5	8	4.5	2																	
	10	20	25	30	40	H+10																													
	12	20	25	30	40	H+12																													
	13	20	25	30	40	H+16																													
	16	20	25	30	40	H+20																													
	20	25	30	40	50	60													H+17	50	16	8	32	24	36	6.6	M6	6.6	11	6.5					
	25	30	40	50	60	H+20																													
	30	30	40	50	60	H+24																													
	35	40	50	60	80	H+30																													
	40	40	50	60	80	H+36																													
50	50	60	80	H+40																															

Ordering Example: Part Number - H
 SHKWS20 - 30
 SHKPSH20 - 30.6

ex Example
 Combination of these app. examples can be selected on the Web.
 Details about Selection Procedure P.87



Shaft Supports Bottom Mount Set Screw (Machined)

Standard / Wide

Standard

Type	Material	Surface Treatment	Accessory
SHSC	EN 1.1191	Black Oxide	Hex Socket Set Screw 1 pc.
SHBM	EN 1.1191 Equiv.	Electroless Nickel Plating	Hex Socket Set Screw 1 pc. (Stainless Steel)
SHSB	EN 1.4301 Equiv.	-	Hex Socket Set Screw 1 pc. (Stainless Steel)
SHSA	EN AW-6063 Equiv.	Clear Anodize	Hex Socket Set Screw 1 pc. (Stainless Steel)

RoHS

Part Number Type	D	H Selection				L	H ₁	T	L ₁	Set Screw M	M ₁	Unit Price					
		15	20	25	30							SHSC	SHBM	SHSB	SHSA		
SHSC SHBM SHSB SHSA	8	15	20	25	30	16	H+9	12	10	M4	M4						
	10	20	25	30		H+10											
	12	20	25	30		H+11											
	13	20	25	30		H+12		14									
	15	25	30	40		H+15		16									
	16	25	30	40													
	18	25	30	40	50	H+18	16	18	M6	M6							
	20	25	30	40	50												
	25	30	40	50		H+20	(15)	24									
	30	30	40	50	60	H+23	22	32	M6	M8							
	35	40	50	60													
	40	40	50	60							H+30						

Values in () are the T dimensions of SHSA (Aluminum).

Wide

Type	Material	Surface Treatment	Accessory
SHSCN	EN 1.1191	Black Oxide	Hex Socket Set Screw 1 pc.
SHBMN	EN 1.1191 Equiv.	Electroless Nickel Plating	Hex Socket Set Screw 1 pc. (Stainless Steel)

RoHS

Part Number Type	D	H Selection				L	H ₁	T	L ₁	Set Screw M	M ₁	Unit Price	
		20	25	30	40							SHSCN	SHBMN
SHSCN SHBMN	10	20	25	30	22	H+10	18	12	M6	M6			
	12	20	25	30									
	16	25	30	40	25	H+15	20	14	M8	M8			
	20	25	30	40							50		
	25	30	40	50	38	H+20	30	24	M8	M8			
	30	30	40	50							60		
	35	40	50	60	50	H+25	35	32	M8	M8			
	40	40	50	60								H+30	

Ordering Example: Part Number - H
SHBM16 - 25
SHSCN20 - 30

Alterations

Alteration	Code	Spec.
	HC	Changes shaft mounting height. Change H to HC to specify height. Specify HC in 0.1mm increments. Specifiable Range: Hmin.<HC<Hmax. Ordering Code: HC35.6

Alterations are not available for Stocked Items - Wide Type. Express Service is not available.

Shaft Supports Bottom Mount Slit (Machined)

Standard / Wide

Standard

Type	Material	Surface Treatment	Accessory
SHSBB	EN 1.1191	Black Oxide	Hex Socket Head Cap Screw 1 pc.
SHSBM	EN 1.1191 Equiv.	Electroless Nickel Plating	Hex Socket Head Cap Screw 1 pc. (Stainless Steel)
SHSBS	EN 1.4301 Equiv.	-	Hex Socket Head Cap Screw 1 pc. (Stainless Steel)
SHSBA	Aluminum Alloy 6000 series	Clear Anodize	Hex Socket Head Cap Screw 1 pc.
SHSBK	Aluminum Alloy 6000 series	Black Anodize	Hex Socket Head Cap Screw 1 pc.

RoHS

Part Number Type	D	H Selection				L	H ₁	T	L ₁	E	Tightening Screw M	M ₁	d	d ₁	ℓ	C	Unit Price					
		15	20	25	30												SHSBB	SHSBM	SHSBS	SHSBA	SHSBK	
SHSBB SHSBM SHSBS SHSBA SHSBK	8	15	20	25	30	16	H+16	10	11	M4	Depth 8	4	4.5	8	4.5	2						
	10	20	25	30																		
	12	20	25	30																		
	13	20	25	30	22	H+18	12	14	13	M4	Depth 8	4	4.5	8	4.5	2						
	15	25	30	40																		
	16	25	30	40	25	H+20	16	15	M6	Depth 12	6	6.6	11	6.5	3							
	18	25	30	40												50						
	20	25	30	40	50	32	H+26	16	18	18	M6	Depth 12	6	6.6	11	6.5	3					
	25	30	40	50																		
	30	30	40	50	60	38	H+28	(15)	24	21	M8	Depth 16	8	9	14	9	3					
	35	40	50	60																		
	40	40	50	60		H+38	22	32	27	29												

Values in () are the T dimensions of SHSBA and SHSBK (Aluminum).

Wide

Type	Material	Surface Treatment	Accessory
SHSBBN	EN 1.1191	Black Oxide	Hex Socket Head Cap Screw 1 pc.
SHSBMN	EN 1.1191 Equiv.	Electroless Nickel Plating	Hex Socket Head Cap Screw 1 pc. (Stainless Steel)
SHSBSN	EN 1.4301 Equiv.	-	Hex Socket Head Cap Screw 1 pc. (Stainless Steel)

RoHS

Part Number Type	D	H Selection				L	H ₁	T	L ₁	E	Tightening Screw M	M ₁	d	d ₁	ℓ	C	Unit Price		
		20	25	30	40												SHSBBN	SHSBMN	SHSBSN
SHSBBN SHSBMN SHSBSN	10	20	25	30	22	H+19	18	12	11	M6	Through	M6	6.6	11	6.5	2			
	12	20	25	30															
	16	25	30	40	25	H+20	20	14	13	M8	Depth 16	M8	9	14	9	3			
	20	25	30	40													50		
	25	30	40	50	38	H+28	30	24	19	M8	Depth 16	M8	9	14	9	3			
	30	30	40	50													60		
	35	40	50	60	50	H+36	35	32	27	M8	Depth 16	M8	9	14	9	3			
	40	40	50	60														H+38	

Ordering Example: Part Number - H
SHSBS20 - 30
SHSBMN30 - 30

Alterations

Alteration	Code	Spec.
	HC	Changes shaft mounting height. Change H to HC to specify height. Specify HC in 0.1mm increments. Specifiable Range: Hmin.<HC<Hmax. Ordering Code: HC35.6


Alterations are not available for Stocked Items - Wide Type. Express Service is not available.

Shaft Supports Bottom Mount Split (Machined)

Standard / Wide

■ **Features:** Screw mount from underside is effective when the mounting host is too thin to tap, and in space limited applications.

■ **Standard**

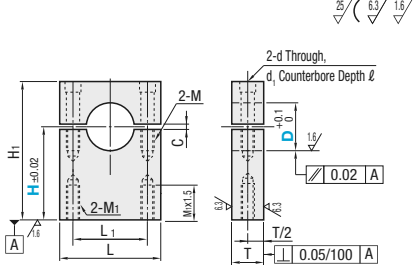


RoHS

Type	Material	Surface Treatment	Accessory
SHSPB	EN 1.1191 Equiv.	Black Oxide	Hex Socket Head Cap Screw 2 pcs.
SHSPM	EN 1.4301 Equiv.	Electroless Nickel Plating	Hex Socket Head Cap Screw 2 pcs. (Stainless Steel)
SHSPS	Aluminum Alloy 6000 series	Clear Anodize	Hex Socket Head Cap Screw 2 pcs.
SHSPA		Black Anodize	
SHSPK		Black Anodize	Hex Socket Head Cap Screw 2 pcs.

This Split Type enables shafts to be mounted from above.

☞ P250



2-d Through
d₁ Counterbore Depth ℓ

2-M

H₁

H±0.02

1.6

0.02 | A

2-M₁

L₁

L

Max1.5

6.3

3

T/2


T

0.05/100 | A

Part Number Type	D	H Selection				L	H ₁	T	L ₁	Tightening Screw M	M ₁	d	d ₁	ℓ	C	Unit Price				
		SHSPB	SHSPM	SHSPS	SHSPA											SHSPK				
SHSPB SHSPM SHSPS SHSPA SHSPK	8	25	30		26			16	M4 Depth 8	4	4.5	8	4.5	2						
	10	25	30			H+10	12	20												
	12	25	30				21	20												
	13	25	30					21	M6 Depth 12	6	6.6	11	6.5	2						
	15	25	30	40		H+12	23	23												
	16	25	30	40				23							23					
	18		30	40	50		H+17	16	28	M8 Depth 16	8	9	14	9	3					
	20		30	40	50		H+20	16	34											
	25		30	40	50			15	36											
	30			40	50	60		70	48											
	35			40	50	60		70	48											
	40			40	50	60		76	56											

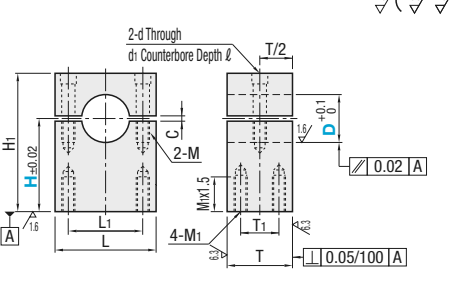
☞ Values in () are the T dimensions of SHSPA and SHSPK (Aluminum).

■ **Wide**



RoHS

Type	Material	Surface Treatment	Accessory
SHSPBN	EN 1.1191 Equiv.	Black Oxide	Hex Socket Head Cap Screw 2 pcs.
SHSPMN	EN 1.4301 Equiv.	Electroless Nickel Plating	Hex Socket Head Cap Screw 2 pcs. (Stainless Steel)
SHSPSN		-	



2-d Through
d₁ Counterbore Depth ℓ

T/2

H₁

H±0.02

1.6

0.02 | A

2-M

L₁

L

Max1.5

6.3

3

T

0.05/100 | A

Part Number Type	D	H Selection				L	H ₁	T	T ₁	L ₁	Tightening Screw M	M ₁	d	d ₁	ℓ	C	Unit Price			
		SHSPBN	SHSPMN	SHSPSN																
SHSPBN SHSPMN SHSPSN	10	25	30		37	H+11	24	16	22	M6 Depth 12	M4	6.6	11	6.5	2					
	12	25	30		39	H+12	24	24												
	15	25	30	40	46	H+14	26	18	28											
	16	25	30	40					30	M8 Depth 16	M6	9	14	9	2					
	20		30	40	50				34											
	25		30	40	50		H+18	30	20							38				
	30			40	50	60		62	44											
	35			40	50	60		66	48											
	40			40	50	60		72	54											

☞ Ordering Example: Part Number - H
SHSPB10 - 25
SHSPB16 - 30

☞ Alterations Example: Part Number - HC
SHSPB25 - HC31.5
SHSPS16 - HC35.6
☞ Alterations are not available for Wide Type. ☞ Express Service is not available.

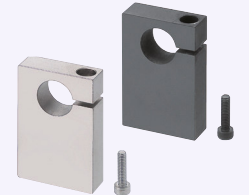
Alteration	Code	Spec.
Mounting Height	HC	Changes shaft mounting height. Change H to HC to specify height. ☞ Specify HC in 0.1mm increments. ☞ Specifiable Range Hmin.<HC<Hmax. [Ordering Code] HC35.6

Shaft Supports Bottom Mount (Machined)

Side Slit

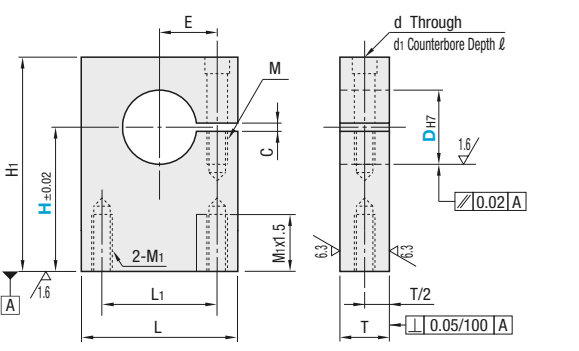
■ **Features:** Screw mount from underside is effective when the mounting host is too thin to tap, and in space limited applications.

■ **Side Slit**



RoHS

Type	Material	Surface Treatment	Accessory
SHSWB	EN 1.1191 Equiv.	Black Oxide	Hex Socket Head Cap Screw 1 pc.
SHSWM	EN 1.4301 Equiv.	Electroless Nickel Plating	Hex Socket Head Cap Screw 1 pc. (Stainless Steel)
SHSWS	EN 1.4301 Equiv.	-	Hex Socket Head Cap Screw 1 pc. (Stainless Steel)
SHSWA	EN AW-6063 Equiv.	Clear Anodize	



2-d Through
d₁ Counterbore Depth ℓ

M

H₁

H±0.02

1.6

0.02 | A

2-M₁

L₁

L

Max1.5

6.3

3

T/2

T

0.05/100 | A

Part Number Type	D	H Selection				L	H ₁	T	L ₁	E	Tightening Screw M	M ₁	d	d ₁	ℓ	C	Unit Price			
		SHSWB	SHSWM	SHSWS	SHSWA															
SHSWB SHSWM SHSWS SHSWA	8	25	30		26	H+7		16	8	M4 Depth 8	4	4.5	8	4.5	2					
	10	25	30			H+9		20	10											
	12	25	30			H+10	12	21	10.5											
	13	25	30					21	10.5	M6 Depth 12	6	6.6	11	6.5	2					
	15	25	30	40		H+12	34	23	11.5											
	16	25	30	40				23	11.5											
	18		30	40	50		H+15	16	28	14	M8 Depth 16	8	9	14	9	3				
	20		30	40	50		H+18	16	34	17										
	25		30	40	50			15	36	18										
	30			40	50	60		70	48	24										
	35			40	50	60		70	48	24										
	40			40	50	60		76	56	28										

☞ Values in () are the T dimensions of SHSWA (Aluminum).

☞ Ordering Example: Part Number - H
SHSWB8 - 30

☞ Alterations Example: Part Number - HC
SHSWB20 - HC41.5
☞ Express Service is not available.


Alteration	Code	Spec.
Mounting Height	HC	Changes shaft mounting height. Change H to HC to specify height. ☞ Specify HC in 0.1mm increments. ☞ Specifiable Range Hmin.<HC<Hmax. [Ordering Code] HC35.6

Shaft Supports Side Mount (Machined)

Standard / Slit

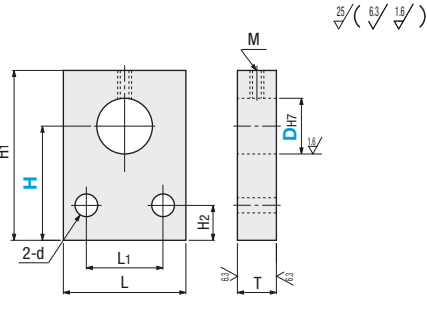
■ Features: Enables to mount on the plate side.

■ Standard



RoHS


Type	Material	Surface Treatment	Accessory
SHQB	EN 1.1191	Black Oxide	Hex Socket Set Screw 1 pc.
SHQM	Equiv.	Electroless Nickel Plating	Hex Socket Set Screw 1 pc. (Stainless Steel)



25 / (63 / 1.5)

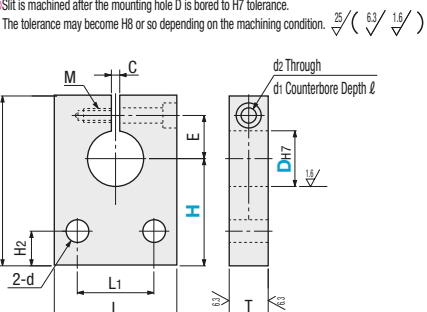
Part Number Type	D	H Selection				L	H ₁	H ₂	T	L ₁	d	Set Screw M	Unit Price	
		25	30	40	50								SHQB	SHQM
SHQB SHQM	8	25	30			22	H+9			10				
	10	25	30				H+10							
	12	25	30			25	H+11	5	12	14	4.5	4		
	13	25	30				H+12							
	15	25	30	40		28	H+15			16				
	16	25	30	40										
	18	25	30	40	50	32	H+18	7	16	18	6.6	6		
	20	25	30	40	50									
	25		30	40	50	38	H+20			24				
	30		30	40	50	50	H+23	10	22	32	9	6		
	35			40	50	60		H+25						
	40			40	50	60		H+30						

■ Slit Type



RoHS

Type	Material	Surface Treatment	Accessory
SHYB	EN 1.1191	Black Oxide	Hex Socket Head Cap Screw 1 pc.
SHYM	Equiv.	Electroless Nickel Plating	Hex Socket Head Cap Screw 1 pc.
SHYS	EN 1.4301	-	Hex Socket Head Cap Screw 1 pc. (Stainless Steel)
SHYA	Aluminum Alloy 6000 series	Clear Anodize	



25 / (63 / 1.5)

Part Number Type	D	H Selection				L	H ₁	H ₂	T	L ₁	E	d	Tightening Screw M	d ₂	d ₁	l	C	Unit Price			
		20	25	30	40													SHYB	SHYM	SHYS	SHYA
SHYB SHYM SHYS SHYA	8	20	25	30		22	H+16			10	11										
	10	20	25	30																	
	12	20	25	30		25	H+18	5	12	14	13	4.5	M4 Depth 8	4.5	8	4.5	2				
	13	20	25	30																	
	15		25	30	40	28	H+20			16	15										
	16		25	30	40																
	18		25	30	40	50	32	H+26	7	16	18	18	6.6	M6 Depth 12	6.6	11	6.5				
	20		25	30	40	50															
	25			30	40	50	38	H+28		24	21										
	30			30	40	50	50	H+33	10	22	24	24	9	M	9	14	9	3			
	35				40	50	60		H+36		27	27									
	40				40	50	60		H+38		29	29									

⚠ Values in () are the T dimensions of SHYA (Aluminum).

Ordering Example: Part Number - H
SHQM16 - 25
SHYS12 - 30

Alterations Part Number - HC
SHQM16 - HC35.6
SHYS40 - HC50.5


Alteration	Code	Spec.
Mounting Height	HC	Changes shaft mounting height. Change H to HC to specify height. Specify HC in 0.1mm increments. Specifiable Range: Hmin. < HC < Hmax. Ordering Code: HC35.6

Shaft Supports Side Mount (Machined)

Side Slit / Split

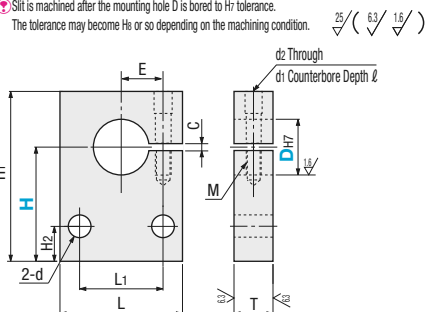
■ Features: Enables to mount on the plate side.

■ Side Slit



RoHS

Type	Material	Surface Treatment	Accessory
SHUB	EN 1.1191	Black Oxide	Hex Socket Head Cap Screw 1 pc.
SHUM	Equiv.	Electroless Nickel Plating	Hex Socket Head Cap Screw 1 pc.
SHUS	EN 1.4301	-	Hex Socket Head Cap Screw 1 pc. (Stainless Steel)
SHUA	EN AW-6063	Clear Anodize	




25 / (63 / 1.5)

Part Number Type	D	H Selection				L	H ₁	H ₂	T	L ₁	E	d	Tightening Screw M	d ₂	d ₁	l	C	Unit Price			
		25	30	40	50													SHUB	SHUM	SHUS	SHUA
SHUB SHUM SHUS SHUA	8	25	30			26	H+7			16	8										
	10	25	30																		
	12	25	30			32	H+10	5	12	20	10	4.5	M4 Depth 8	4.5	8	4.5	2				
	13	25	30							21	10.5										
	15	25	30	40		34	H+12			23	11.5										
	16	25	30	40																	
	18		30	40	50	44	H+15	7	16	28	14	6.6	M6 Depth 12	6.6	11	6.5					
	20		30	40	50					34	17										
	25		30	40	50	50	H+18			36	18										
	30			40	50	60	70	H+21	10	22	24	9	M8 Depth 16	9	14	9	3				
	35			40	50	60		H+24													
	40			40	50	60	76	H+27			56	28									

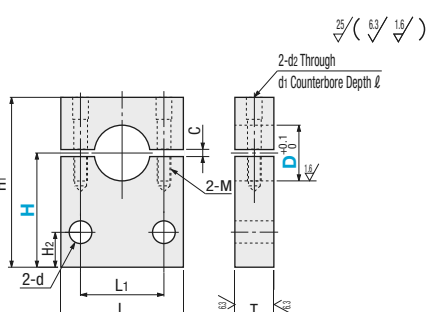
⚠ Values in () are the T dimensions of SHUA (Aluminum).

■ Split Type



RoHS

Type	Material	Surface Treatment	Accessory
SHZB	EN 1.1191	Black Oxide	Hex Socket Head Cap Screw 2 pcs.
SHZM	Equiv.	Electroless Nickel Plating	Hex Socket Head Cap Screw 2 pcs.
SHZS	EN 1.4301	-	Hex Socket Head Cap Screw 2 pcs. (Stainless Steel)
SHZA	EN AW-6063	Clear Anodize	



25 / (63 / 1.5)

Part Number Type	D	H Selection				L	H ₁	H ₂	T	L ₁	d	Tightening Screw M	d ₂	d ₁	l	C	Unit Price			
		25	30	40	50												SHZB	SHZM	SHZS	SHZA
SHZB SHZM SHZS SHZA	8	25	30			26				16										
	10	25	30																	
	12	25	30			32	H+10	5	12	20	4.5	M4 Depth 8	4.5	8	4.5	2				
	13	25	30							21										
	15	25	30	40		34	H+12			23										
	16	25	30	40																
	18		30	40	50	44	H+17	7	16	28	14	6.6	M6 Depth 12	6.6	11	6.5				
	20		30	40	50					34	17									
	25		30	40	50	50	H+20			36	18									
	30			40	50	60	70	H+30	10	22	24	9	M8 Depth 16	9	14	9	3			
	35			40	50	60														
	40			40	50	60	76				56	28								

⚠ Values in () are the T dimensions of SHZA (Aluminum).

Ordering Example: Part Number - H
SHUA10 - 25
SHZM16 - 30

Alterations Part Number - HC
SHUS25 - HC31.5
SHZM16 - HC35.6

Alteration	Code	Spec.
Mounting Height	HC	Changes shaft mounting height. Change H to HC to specify height. Specify HC in 0.1mm increments. Specifiable Range: Hmin. < HC < Hmax. Ordering Code: HC35.6