

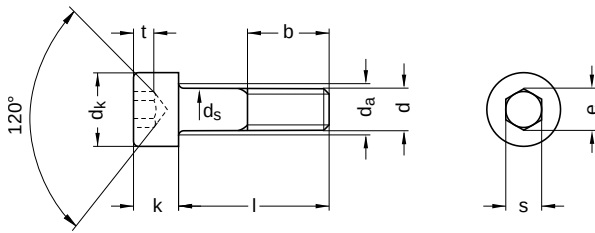
DIN 912 similar to ISO 4762

Cylinder screws

Hexagon socket

Stainless steel A2 | Cr(VI)-free | Metric thread

Further information: DIN-standard has been withdrawn | changed nominal lengths | the fine thread has been transferred to ISO 12474



Diameter (d)	b nominal size	d _a max.	d _k		d _s		k		e min.	s		t min.	
			min.	max.	min.	max.	min.	max.		nominal size	min.		max.
M 1.6	15	2.0	2.86	3.0	1.46	1.6	1.46	1.6	1.73	1.5	1.52	1.56	0.7
M 2	16	2.6	3.62	3.8	1.86	2.0	1.86	2.0	1.73	1.5	1.52	1.56	1.0
M 2.5	17	3.1	4.32	4.5	2.36	2.5	2.36	2.5	2.30	2.0	2.02	2.06	1.1
M 3	18	3.6	5.32	5.5	2.86	3.0	2.86	3.0	2.87	2.5	2.52	2.58	1.3
M 4	20	4.7	6.78	7.0	3.82	4.0	3.82	4.0	3.44	3.0	3.02	3.08	2.0
M 5	22	5.7	8.28	8.5	4.82	5.0	4.82	5.0	4.58	4.0	4.02	4.10	2.5
M 6	24	6.8	9.78	10.0	5.82	6.0	5.82	6.0	5.72	5.0	5.02	5.14	3.0
M 8	28	9.2	12.73	13.0	7.78	8.0	7.78	8.0	6.86	6.0	6.05	6.14	4.0
M 10	32	11.2	15.73	16.0	9.78	10.0	9.64	10.0	9.15	8.0	8.02	8.18	5.0
M 12	36	13.7	17.73	18.0	11.73	12.0	11.57	12.0	11.43	10.0	10.02	10.18	6.0
M 14	40	15.7	20.67	21.0	13.73	14.0	13.57	14.0	13.72	12.0	12.03	12.21	7.0
M 16	44	17.7	23.67	24.0	15.73	16.0	15.57	16.0	16.00	14.0	14.03	14.21	8.0
M 18	48	20.2	26.67	27.0	17.73	18.0	17.57	18.0	16.00	14.0	14.03	14.21	9.0
M 20	52	22.4	29.67	30.0	19.67	20.0	19.48	20.0	19.44	17.0	17.05	17.23	10.0
M 24	60	26.4	35.61	36.0	23.67	24.0	23.48	24.0	21.73	19.0	19.06	19.28	12.0
M 27	66	30.4	39.61	40.0	26.67	27.0	26.48	27.0	21.73	19.0	19.06	19.28	13.5
M 30	72	33.4	44.61	45.0	29.67	30.0	29.48	30.0	25.15	22.0	22.06	22.28	15.5

All technical data refer to the measure mm



DIN 912 similar to ISO 4762

Cylinder screws

Hexagon socket

Stainless steel A2 | Cr(VI)-free | Metric thread

nominal size	Length (l)	
	min.	max.
3	2.80	3.20
4	3.76	4.24
5	4.76	5.24
6	5.76	6.24
8	7.71	8.29
10	9.71	10.29
12	11.65	12.35
14	13.65	14.35
16	15.65	16.35
18	17.65	18.35
20	19.58	20.42
22	21.59	22.42

nominal size	Length (l)	
	min.	max.
25	24.58	25.42
30	29.58	30.42
35	34.50	35.50
40	39.50	40.50
45	44.50	45.50
50	49.50	50.50
55	54.40	55.60
60	59.40	60.60
65	64.40	65.60
70	69.40	70.60
75	74.40	75.60
80	79.40	80.60

nominal size	Length (l)	
	min.	max.
90	89.30	90.70
100	99.30	100.70
110	109.30	110.70
120	119.30	120.70
130	129.20	130.80
140	139.20	140.80
150	149.20	150.80
160	159.20	160.80
170	169.20	170.80
180	179.20	180.80
190	189.10	190.90
200	199.10	200.90

All technical data refer to the measure mm

