

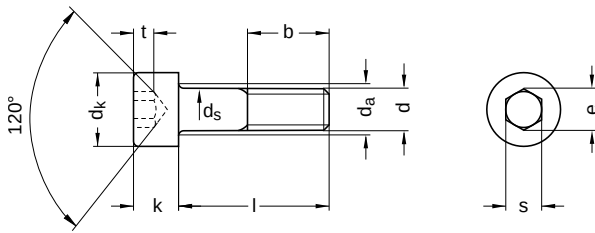
DIN 912 similar to ISO 4762

Cylinder screws

Hexagon socket

Steel 8.8 | bright | Cr(VI)-free | Metric thread

Further information: DIN-standard has been withdrawn | changed nominal lengths | the fine thread has been transferred to ISO 12474



Diameter (d)	b nominal size	da max.	dk		ds		k		e min.	s nominal size	s		t min.
			min.	max.	min.	max.	min.	max.					
M 3	18	3.6	5.32	5.5	2.86	3	2.86	3	2.87	2.5	2.52	2.58	1.3
M 4	20	4.7	6.78	7.0	3.82	4	3.82	4	3.44	3.0	3.02	3.08	2.0
M 5	22	5.7	8.28	8.5	4.82	5	4.82	5	4.58	4.0	4.02	4.10	2.5
M 6	24	6.8	9.78	10.0	5.82	6	5.82	6	5.72	5.0	5.02	5.14	3.0
M 8	28	9.2	12.73	13.0	7.78	8	7.78	8	6.86	6.0	6.05	6.14	4.0
M 10	32	11.2	15.73	16.0	9.78	10	9.64	10	9.15	8.0	8.02	8.18	5.0
M 12	36	13.7	17.73	18.0	11.73	12	11.57	12	11.43	10.0	10.02	10.18	6.0
M 14	40	15.7	20.67	21.0	13.73	14	13.57	14	13.72	12.0	12.03	12.21	7.0
M 16	44	17.7	23.67	24.0	15.73	16	15.57	16	16.00	14.0	14.03	14.21	8.0
M 18	48	20.2	26.67	27.0	17.73	18	17.57	18	16.00	14.0	14.03	14.21	9.0
M 20	52	22.4	29.67	30.0	19.67	20	19.48	20	19.44	17.0	17.05	17.23	10.0
M 24	60	26.4	35.61	36.0	23.67	24	23.48	24	21.73	19.0	19.06	19.28	12.0
M 27	66	30.4	39.61	40.0	26.67	27	26.48	27	21.73	19.0	19.06	19.28	13.5
M 30	72	33.4	44.61	45.0	29.67	30	29.48	30	25.15	22.0	22.06	22.28	15.5
M 36	84	39.4	53.54	54.0	35.61	36	35.38	36	30.85	27.0	27.06	27.28	19.0

All technical data refer to the measure mm



DIN 912 similar to ISO 4762

Cylinder screws

Hexagon socket

Steel 8.8 | bright | Cr(VI)-free | Metric thread

Length (l)			Length (l)			Length (l)		
nominal size	min.	max.	nominal size	min.	max.	nominal size	min.	max.
4	3.76	4.24	90	89.30	90.70	320	318.85	321.15
5	4.76	5.24	95	94.30	95.70	330	328.85	331.15
6	5.76	6.24	100	99.30	100.70	340	338.85	341.15
8	7.71	8.29	110	109.30	110.70	350	348.85	351.15
10	9.71	10.29	120	119.30	120.70	360	358.85	361.15
12	11.65	12.35	130	129.20	130.80	370	368.85	371.15
14	13.65	14.35	140	139.20	140.80	380	378.85	381.15
16	15.65	16.35	150	149.20	150.80	390	388.85	391.15
18	17.65	18.35	160	159.20	160.80	400	398.85	401.15
20	19.58	20.42	170	169.20	170.80	410	408.75	411.25
22	21.59	22.42	180	179.20	180.80	420	418.75	421.25
25	24.58	25.42	190	189.10	190.90	430	428.75	431.25
30	29.58	30.42	200	199.10	200.90	440	438.75	441.25
35	34.50	35.50	210	209.10	210.90	450	448.75	451.25
40	39.50	40.50	220	219.10	220.90	460	458.75	461.25
45	44.50	45.50	230	229.10	230.90	470	468.75	471.25
50	49.50	50.50	240	239.10	240.90	480	478.75	481.25
55	54.40	55.60	250	249.10	250.90	490	488.75	491.25
60	59.40	60.60	260	258.95	261.05	500	498.75	501.25
65	64.40	65.60	270	268.95	271.05	520	518.75	521.25
70	69.40	70.60	280	278.95	281.05	540	538.75	541.25
75	74.40	75.60	290	288.95	291.05	560	558.75	561.25
80	79.40	80.60	300	298.95	301.05	580	578.75	581.25
85	84.30	85.70	310	308.95	311.05	600	598.75	601.25

All technical data refer to the measure mm

