

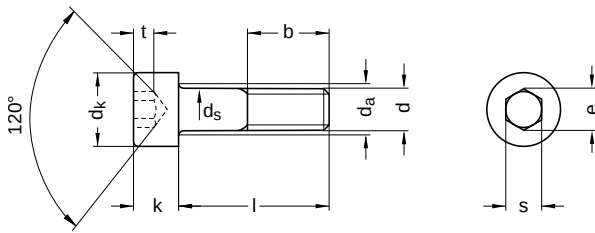
DIN 912 similar to ISO 4762

Cylinder screws

Hexagon socket

Steel 8.8 | zinc-plated | Cr(VI)-free | Metric thread

Further information: DIN-standard has been withdrawn | changed nominal lengths | the fine thread has been transferred to ISO 12474



| Diameter (d) | b nominal size | da max. | dk | | ds | | k | | e min. | s nominal size | s | | t min. |
|-----------------|-------------------|------------|-------|------|-------|------|-------|------|-----------|-------------------|-------|-------|-----------|
| | | | min. | max. | min. | max. | min. | max. | | | | | |
| M 3 | 18 | 3.6 | 5.32 | 5.5 | 2.86 | 3 | 2.86 | 3 | 2.87 | 2.5 | 2.52 | 2.58 | 1.3 |
| M 4 | 20 | 4.7 | 6.78 | 7.0 | 3.82 | 4 | 3.82 | 4 | 3.44 | 3.0 | 3.02 | 3.08 | 2.0 |
| M 5 | 22 | 5.7 | 8.28 | 8.5 | 4.82 | 5 | 4.82 | 5 | 4.58 | 4.0 | 4.02 | 4.10 | 2.5 |
| M 6 | 24 | 6.8 | 9.78 | 10.0 | 5.82 | 6 | 5.82 | 6 | 5.72 | 5.0 | 5.02 | 5.14 | 3.0 |
| M 8 | 28 | 9.2 | 12.73 | 13.0 | 7.78 | 8 | 7.78 | 8 | 6.86 | 6.0 | 6.05 | 6.14 | 4.0 |
| M 10 | 32 | 11.2 | 15.73 | 16.0 | 9.78 | 10 | 9.64 | 10 | 9.15 | 8.0 | 8.02 | 8.18 | 5.0 |
| M 12 | 36 | 13.7 | 17.73 | 18.0 | 11.73 | 12 | 11.57 | 12 | 11.43 | 10.0 | 10.02 | 10.18 | 6.0 |
| M 14 | 40 | 15.7 | 20.67 | 21.0 | 13.73 | 14 | 13.57 | 14 | 13.72 | 12.0 | 12.03 | 12.21 | 7.0 |
| M 16 | 44 | 17.7 | 23.67 | 24.0 | 15.73 | 16 | 15.57 | 16 | 16.00 | 14.0 | 14.03 | 14.21 | 8.0 |
| M 20 | 52 | 22.4 | 29.67 | 30.0 | 19.67 | 20 | 19.48 | 20 | 19.44 | 17.0 | 17.05 | 17.23 | 10.0 |
| M 24 | 60 | 26.4 | 35.61 | 36.0 | 23.67 | 24 | 23.48 | 24 | 21.73 | 19.0 | 19.06 | 19.28 | 12.0 |
| M 27 | 66 | 30.4 | 39.61 | 40.0 | 26.67 | 27 | 26.48 | 27 | 21.73 | 19.0 | 19.06 | 19.28 | 13.5 |
| M 30 | 72 | 33.4 | 44.61 | 45.0 | 29.67 | 30 | 29.48 | 30 | 25.15 | 22.0 | 22.06 | 22.28 | 15.5 |

All technical data refer to the measure mm



DIN 912 similar to ISO 4762

Cylinder screws

Hexagon socket

Steel 8.8 | zinc-plated | Cr(VI)-free | Metric thread

| nominal size | Length (l) | |
|--------------|------------|-------|
| | min. | max. |
| 5 | 4.76 | 5.24 |
| 6 | 5.76 | 6.24 |
| 8 | 7.71 | 8.29 |
| 10 | 9.71 | 10.29 |
| 12 | 11.65 | 12.35 |
| 14 | 13.65 | 14.35 |
| 16 | 15.65 | 16.35 |
| 18 | 17.65 | 18.35 |
| 20 | 19.58 | 20.42 |
| 22 | 21.59 | 22.42 |
| 25 | 24.58 | 25.42 |
| 30 | 29.58 | 30.42 |
| 35 | 34.50 | 35.50 |
| 40 | 39.50 | 40.50 |
| 45 | 44.50 | 45.50 |
| 50 | 49.50 | 50.50 |

| nominal size | Length (l) | |
|--------------|------------|--------|
| | min. | max. |
| 55 | 54.40 | 55.60 |
| 60 | 59.40 | 60.60 |
| 65 | 64.40 | 65.60 |
| 70 | 69.40 | 70.60 |
| 75 | 74.40 | 75.60 |
| 80 | 79.40 | 80.60 |
| 85 | 84.30 | 85.70 |
| 90 | 89.30 | 90.70 |
| 100 | 99.30 | 100.70 |
| 110 | 109.30 | 110.70 |
| 120 | 119.30 | 120.70 |
| 130 | 129.20 | 130.80 |
| 140 | 139.20 | 140.80 |
| 150 | 149.20 | 150.80 |
| 160 | 159.20 | 160.80 |
| 170 | 169.20 | 170.80 |

| nominal size | Length (l) | |
|--------------|------------|--------|
| | min. | max. |
| 180 | 179.20 | 180.80 |
| 190 | 189.10 | 190.90 |
| 200 | 199.10 | 200.90 |
| 210 | 209.10 | 210.90 |
| 220 | 219.10 | 220.90 |
| 230 | 229.10 | 230.90 |
| 240 | 239.10 | 240.90 |
| 250 | 249.10 | 250.90 |
| 260 | 258.95 | 261.05 |
| 270 | 268.95 | 271.05 |
| 280 | 278.95 | 281.05 |
| 300 | 298.95 | 301.05 |

All technical data refer to the measure mm

