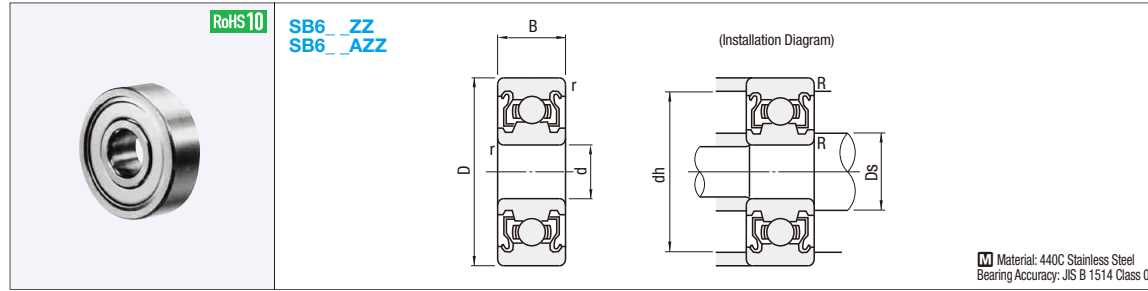


# Stainless Steel Small Deep Groove Ball Bearings

## Double Shielded



| Part Number | d   | D  | B   | r (min) | Basic Load Rating |                | Allowable Rotational Speed rpm (Reference) | Relative Dimensions |          |         | Mass (g) (Reference) | Unit Price |
|-------------|-----|----|-----|---------|-------------------|----------------|--|---------------------|----------|---------|----------------------|------------|
|             |     |    |     |         | Cr (Dynamic) N    | Cor (Static) N |  | Ds (min)            | dh (max) | R (max) |                      |            |
| SB682ZZ     | 2   | 5  | 2.3 | 0.08    | 143               | 40             | 85000                                      | 2.7                 | 3.9      | 0.08    | 0.17                 |            |
| SB692ZZ     |     | 6  | 3.0 | 0.15    | 281               | 79             | 75000                                      | 3.0                 | 4.8      | 0.15    | 0.38                 |            |
| SB602ZZ     |     | 7  | 3.5 |         | 328               | 102            | 60000                                      | 3.2                 | 5.8      |         | 0.58                 |            |
| SB682AZZ    | 2.5 | 6  | 2.6 | 0.08    | 178               | 59             | 71000                                      | 3.7                 | 4.9      | 0.08    | 0.29                 |            |
| SB692AZZ    |     | 7  | 3.5 | 0.15    | 328               | 102            | 63000                                      | 3.85                | 5.65     | 0.15    | 0.55                 |            |
| SB673ZZ     | 3   | 6  | 2.5 |         | 178               | 59             | 71000                                      | 3.6                 | 5.4      | 0.08    | 0.2                  |            |
| SB683ZZ     |     | 7  | 3   | 0.1     | 331               | 104            | 63000                                      | 3.9                 | 5.8      | 0.1     | 0.45                 |            |
| SB693ZZ     |     | 8  | 4   |         | 474               | 144            | 60000                                      |                     | 6.8      |         | 0.83                 |            |
| SB603ZZ     | 3   | 9  | 5   | 0.15    | 485               | 151            | 56000                                      | 4.2                 | 7.8      | 0.15    | 1.45                 |            |
| SB623ZZ     |     | 10 | 4   |         | 536               | 175            | 50000                                      |                     | 8.8      |         | 1.66                 |            |
| SB633ZZ     |     | 13 | 5   | 0.2     | 1105              | 388            | 40000                                      |                     | 11.4     | 0.2     | 3.33                 |            |
| SB674ZZ     | 4   | 7  | 2.5 |         | 217               | 86             | 60000                                      | 4.6                 | 6.4      | 0.08    | 0.28                 |            |
| SB684ZZ     |     | 9  |     | 0.1     | 544               | 179            | 53000                                      | 5.0                 | 7.8      | 0.1     | 1.01                 |            |
| SB694ZZ     |     | 11 | 4   | 0.15    | 607               | 220            | 48000                                      | 5.2                 | 9.8      | 0.15    | 1.75                 |            |
| SB604ZZ     | 4   | 12 |     | 0.2     | 813               | 276            |  | 5.6                 | 10.4     | 0.2     | 2.29                 |            |
| SB624ZZ     |     | 13 |     |         | 1105              | 386            | 40000                                      |                     | 11.4     |         | 3.04                 |            |
| SB634ZZ     |     | 16 | 5   | 0.3     | 1139              | 418            | 36000                                      | 6                   | 14       | 0.3     | 5.21                 |            |
| SB675ZZ     | 5   | 8  | 2.5 | 0.1     | 174               | 72             | 53000                                      | 5.8                 | 7.4      | 0.1     | 0.34                 |            |
| SB685ZZ     |     | 11 | 5   | 0.15    | 607               | 225            | 45000                                      | 6.2                 | 9.8      |         | 1.96                 |            |
| SB695ZZ     |     | 13 | 4   | 0.2     | 915               | 344            | 43000                                      | 6.6                 | 11.4     | 0.2     | 2.5                  |            |
| SB605ZZ     | 5   | 14 |     |         | 1105              | 404            | 40000                                      |                     | 12.4     |         | 3.48                 |            |
| SB625ZZ     |     | 16 | 5   | 0.3     | 1470              | 536            | 36000                                      | 7                   | 14       | 0.3     | 4.86                 |            |
| SB635ZZ     |     | 19 | 6   |         | 1986              | 708            | 32000                                      |                     | 17       |         | 8.34                 |            |
| SB676ZZ     | 6   | 10 | 3   | 0.1     | 396               | 174            | 45000                                      | 7.04                | 9.3      | 0.1     | 0.68                 |            |
| SB686ZZ     |     | 13 |     | 0.15    | 918               | 352            |  | 7.0                 | 11.8     |         | 2.69                 |            |
| SB696ZZ     |     | 15 | 5   | 0.2     | 1139              | 418            | 40000                                      | 7.6                 | 13.4     | 0.2     | 3.72                 |            |
| SB606ZZ     | 6   | 17 |     |         | 1921              | 668            | 38000                                      |                     | 15       |         | 6.08                 |            |
| SB626ZZ     |     | 19 | 6   | 0.3     | 1986              | 708            | 32000                                      | 8                   | 17       | 0.3     | 7.94                 |            |
| SB636ZZ     |     | 22 | 7   |         | 2833              | 1138           | 30000                                      |                     | 20       |         | 14.5                 |            |
| SB678ZZ     | 8   | 12 | 3.5 | 0.1     | 434               | 219            | 40000                                      | 9.05                | 11.33    | 0.1     | 0.97                 |            |
| SB688ZZ     |     | 16 | 5   | 0.2     | 1368              | 568            | 36000                                      | 9.6                 | 14.4     | 0.2     | 4.02                 |            |
| SB698ZZ     |     | 19 | 6   |         | 1901              | 728            |  |                     | 17       |         | 7.18                 |            |
| SB608ZZ     | 8   | 22 | 7   | 0.3     | 2799              | 1103           | 34000                                      |                     | 20       |         | 12                   |            |
| SB628ZZ     |     | 24 | 8   |         | 2833              | 1138           | 28000                                      |                     | 22       |         | 17                   |            |
| SB638ZZ     |     | 28 | 9   |         | 3879              | 1586           |  |                     | 26       |         | 30.3                 |            |

kgf-Nx0.101972

Ordering Example Part Number SB636ZZ

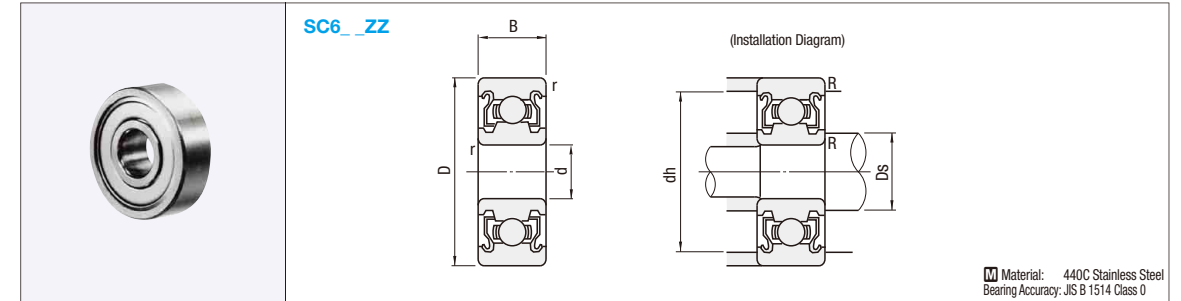
Price Configure Online

Days to Ship Configure Online

# Stainless Steel Small Deep Groove Ball Bearings (Economy)

## Double Shielded

Feature: Economical Stainless Steel Small Deep Groove Ball Bearings made by overseas manufacturers.



| Part Number | d | D  | B   | r (min) | Basic Load Rating |                | Allowable Rotational Speed rpm (Reference) | Relative Dimensions |          |         | Mass (g) (Reference) | Unit Price |  |
|-------------|---|----|-----|---------|-------------------|----------------|--|---------------------|----------|---------|----------------------|------------|--|
|             |   |    |     |         | Cr (Dynamic) N    | Cor (Static) N |  | Ds (min)            | dh (max) | R (max) |                      |            |  |
| SC682ZZ     | 2 | 5  | 2.3 | 0.1     | 166               | 49             | 85000                                      | 2.7                 | 3.9      | 0.08    | 0.17                 |            |  |
| SC692ZZ     |   | 6  | 3   | 0.15    | 330               | 98             | 75000                                      | 3                   | 4.8      | 0.15    | 0.38                 |            |  |
| SC673ZZ     |   | 7  | 2.5 |         | 206               | 69             | 71000                                      | 3.6                 | 5.4      | 0.08    | 0.2                  |            |  |
| SC683ZZ     | 3 | 7  | 3   | 0.1     | 313               | 108            | 63000                                      | 3.9                 | 5.8      | 0.1     | 0.45                 |            |  |
| SC693ZZ     |   | 8  |     |         | 559               | 176            | 60000                                      |                     | 6.8      |         | 0.83                 |            |  |
| SC623ZZ     |   | 10 | 4   | 0.15    | 627               | 216            | 50000                                      | 4.2                 | 8.8      | 0.15    | 1.66                 |            |  |
| SC674ZZ     | 4 | 7  | 2.5 | 0.08    | 255               | 108            | 60000                                      | 4.6                 | 6.4      | 0.08    | 0.28                 |            |  |
| SC684ZZ     |   | 9  |     | 0.1     | 637               | 225            | 53000                                      | 5                   | 7.8      | 0.1     | 1.01                 |            |  |
| SC694ZZ     |   | 11 | 4   | 0.15    | 960               | 353            | 48000                                      | 5.2                 | 9.8      | 0.15    | 1.75                 |            |  |
| SC604ZZ     | 4 | 12 |     |         | 960               | 353            |  | 5.6                 | 10.4     |         | 2.29                 |            |  |
| SC624ZZ     |   | 13 | 5   | 0.2     | 1303              | 490            | 40000                                      |                     | 11.4     | 0.2     | 3.04                 |            |  |
| SC634ZZ     |   | 16 |     | 0.3     | 1340              | 523            | 36000                                      | 6                   | 14       | 0.3     | 5.21                 |            |  |
| SC675ZZ     | 5 | 8  | 2.5 | 0.08    | 216               | 88             | 53000                                      | 5.8                 | 7.4      | 0.1     | 0.34                 |            |  |
| SC685ZZ     |   | 11 | 5   |         | 715               | 282            | 45000                                      | 6.2                 | 9.8      |         | 1.96                 |            |  |
| SC695ZZ     |   | 13 | 4   | 0.2     | 1078              | 431            | 43000                                      | 6.6                 | 11.4     | 0.2     | 2.5                  |            |  |
| SC605ZZ     | 5 | 14 |     |         | 1333              | 510            | 40000                                      |                     | 12.4     |         | 3.48                 |            |  |
| SC625ZZ     |   | 16 | 5   | 0.3     | 1666              | 588            | 36000                                      | 7                   | 14       | 0.3     | 4.86                 |            |  |
| SC676ZZ     |   | 10 | 3   | 0.1     | 500               | 216            | 45000                                      | 7.04                | 9.3      | 0.1     | 0.68                 |            |  |
| SC686ZZ     | 6 | 13 |     | 0.2     | 1078              | 441            |  | 7                   | 11.8     | 0.15    | 2.69                 |            |  |
| SC696ZZ     |   | 15 | 5   |         | 1343              | 520            | 40000                                      |                     | 7.6      | 13.4    | 0.2                  | 3.72       |  |
| SC606ZZ     |   | 17 |     |         | 2264              | 843            | 38000                                      |                     | 15       |         | 6.08                 |            |  |
| SC626ZZ     | 6 | 19 | 6   | 0.3     | 2332              | 882            | 32000                                      | 8                   | 17       | 0.3     | 7.94                 |            |  |
| SC636ZZ     |   | 22 | 7   |         | 3333              | 1423           | 30000                                      |                     | 20       |         | 14.5                 |            |  |
| SC678ZZ     |   | 12 | 3.5 | 0.1     | 510               | 274            | 40000                                      | 9.05                | 11.33    | 0.1     | 0.97                 |            |  |
| SC688ZZ     | 8 | 16 | 5   | 0.2     | 1254              | 588            | 36000                                      | 9.6                 | 14.4     | 0.2     | 4.02                 |            |  |
| SC698ZZ     |   | 19 | 6   |         | 2234              | 921            |  |                     | 17       |         | 7.18                 |            |  |
| SC608ZZ     |   | 22 | 7   | 0.3     | 3293              | 1382           | 34000                                      |                     | 20       | 0.3     | 12                   |            |  |
| SC628ZZ     | 8 | 24 | 8   |         | 3332              | 1421           | 28000                                      |                     | 22       |         | 17                   |            |  |

kgf-Nx0.101972

Ordering Example Part Number SC608ZZ

Price Configure Online

Days to Ship Configure Online

### <Why Economy Type is recommended>

**Economy Type is also in high quality.**  
 Causes for bearing problems can be detected by performing Anderson Inspection. Economy Type shows equivalent actual Anderson values in comparison with our Standard products.

**Anderson Value Comparison of Current MISUMI Standard Products and Current Economy Type**

**What is Anderson Inspection?**  
 This inspection measures the bearing's rotational vibrations in (L, H, M) frequency spectra to determine the bearing's performance. The inspection is used on the finished bearings, serving the purpose of removing bearing initial defects.

MISUMI's Economy Type Bearings are all subject to Anderson Inspection.

Lower value indicates higher product integrity.

Frequency Spectrum

Standard Economy Type Standard Economy Type Standard Economy Type

L M H

Circularity of Groove and Outer Ring Scratches and Foreign Objects on the Track Surface Surface Roughness of Groove and Steel Balls

Indicates the max. and min. Anderson values of the Economy Type.

For details of Economy Type, see P.873.