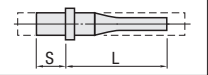


FREE FLANGE POSITION STEPPED EJECTOR PINS WITH TIP PROCESS

— L · P · N DIMENSION DESIGNATION TYPE —

L · P · N dimension designation type



ⓘ Non JIS material definition is listed on P.1351 - 1352

RoHS

Part Number: EPSHS□A, EPSHSE□A

Head Thickness: 4mm(T4)

Tip P: 0 to -0.005, -0.01 to -0.02

Key flat is made on the standard 0° to determine the tip shape position.
Key flat cutting position is (D/2+0.1).

ⓘ Range of guaranteed shaft diameter precision (D) (Details P.1301)
ⓘ Step R (Details P.1302)
ⓘ SKH51 equivalent
ⓘ 58~60HRC
ⓘ Range of guaranteed base material hardness (Details P.1303)

H	Part Number			0.01mm increments		1mm increments	0.01mm increments
	Type	Tip shape	D	L	P	N	S
4	EPSHS (P ⁰ _{-0.005}) EPSHSE (P ^{-0.01} _{-0.02})	1A 14A 27A	2	50.00~200.00	1.50~1.90	N ≥ 15 and 20 ≤ (L-N) ≤ 150	5.00~40.00
5		2A 15A 28A	2.5		1.50~2.40		
6		3A 16A 29A	3		1.50~2.90		
7		4A 17A 30A	3.5	50.00~250.00	1.50~3.40	N ≥ 15 and 20 ≤ (L-N) ≤ 185	5.00~50.00
		5A 18A 31A	4		1.50~3.90		
		6A 19A 32A	4.5		2.50~4.40		
8		7A 20A	5		3.00~4.90		
		8A 21A	5.5		3.50~5.40		
		9A 22A	6		4.00~5.90		
9		10A 23A					
			11A 24A				
			12A 25A				
		13A 26A					

ⓘ Please select a tip shape of 1A~32A from P.181~184

Order

Part Number: EPSHS 5A 5 - 60.00 - P4.62 - N30 - S10.00 - V2.4-F58-G30

Sequence of A · V · E · J · W · R · SR · F · G · K · Q

Days to Ship **Quotation**

Alterations

Part Number: EPSHS5A 5 - L 60.00 - P P4.62 - N N30 - S S10.00 - A · V · E · J · W · R · SR · F · G · K · Q - (AKC · AWC...etc.) - R10-F130.00 - AWC60

Alterations	Code	Spec.	1Code
	AKC	AKC=1° increments 0 < AKC < 360 No need to designate AKCO	Quotation
	AWC	AWC=1° increments 0 ≤ AWC < 360	
	ARC	ARC=1° increments 0 ≤ ARC < 360	
	ADC	ADC=1° increments 0 ≤ ADC < 360	
	KGA	KGA=1° increments 0 < KGA < 360	
	KGB	KGB=1° increments 0 < KGB < 360	

Alteration details P.174

Alterations	Code	Spec.	1Code
	HC	HC=0.1mm increments D+1 ≤ HC < H	Quotation
	HCC	HCC=0.1mm increments D+1 ≤ HCC < H-0.3	
	TC	TC=0.1mm increments 2.0 ≤ TC ≤ 10 and TC ≤ N-10 (Dimensions L, N and S remain unchanged.)	
	NKC	Without key flat cutting Available for tip shapes 6A · 9A · 11A · 12A · 13A · 30A Only available combination is with HC · HCC · TC	

Price **Quotation**