

OIL-FREE SLIDE UNITS FOR LOOSE CORE

—STANDARD • FIXING TYPE—

Ⓢ Non JIS material definition is listed on P.1351 - 1352



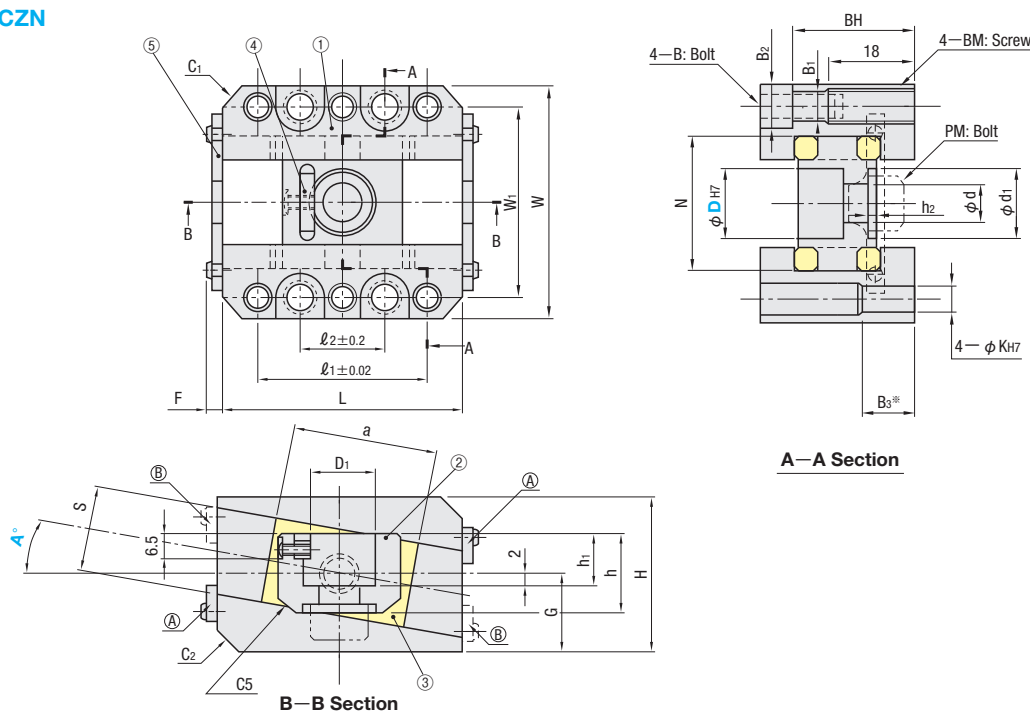
RoHS

- **Features of Oil-free Slide Units for Loose Core**
- Enables the inclined pin to slide smoothly when pushing out a loose core (including undercut) at an angle.
 - The inclined pin holder slides within the range of θ , and the automatic center adjustment function reduces wear and scoring on the guide and slide plates.

Item	Components	Parts Name	Material	Piece
①	Slide base	Slide Base	S55C	2
②	Inclined pin holder	Inclined Pin Holder	SCM440	1
③	Slide plate	Slide Plate	*CAC304+Solid lubricant	2
④	Parallel Key	Key	S45C	1
⑤	Stopper	Stopper	SS400	2

* High strength brass casting class 4 (Old JIS: HBsC4)

SCZN



- Ⓢ (A) and (B) show the mounting position of the stopper. Refer to the angle of A°
- Ⓢ You can specify the mounting angle of the slide plate in 1° -steps between 1° and 10° to match the angle of the undercut of the molded part.

① Slide base		② Inclined pin holder				③ Slide plate		G	F	Part Number	Mounting angle of slide plate A°	U/Price						
W	L	H	C ₁	C ₂	D ₁	d	d ₁					h	h ₁	h ₂	N	S	a	Type
56	55	35	5	—	11	5.5	—	16	10	—	30	20	35	17.5	4.65	SCZN	12	0~10
60	65	36	6	—	15	9	16	18	11	3	33	20	40	18	4.65			
68	70	43	6	5	18	11	20	22	13	5.5	38	24	40	21.5	4.65			
75	80	45	6	5	22	11	20	26	15	5.5	45	26	45	22.5	4.65			
81	95	54	6	5	27.5	11	20	30	17	3.5	51	30	55	27	4.65			

Part Number	Bolt hole dimensions										Mounting position of stopper		
	Type	D	ℓ ₁	ℓ ₂	W ₁	B ₁	B ₂	B ₃	BM	BH	K	(A)	(B)
SCZN	12	42	21	45	6.6	11	—	15	M 8	28.5	6	0° ~ 10°	—
	16	46	25	48	6.6	11	—	15	M 8	29.5	6	0° ~ 10°	—
	20	50	25	55	8.6	13.5	—	20	M10	34.5	8	4° ~ 10°	0° ~ 3°
	25	60	35	62	8.6	13.5	—	20	M10	36.5	8	4° ~ 10°	0° ~ 3°
	30	75	50	68	8.6	13.5	—	20	M10	45.5	8	0° ~ 10°	—



Order

Part Number — A°
SCZN20 — 0



Days to Ship

Quotation

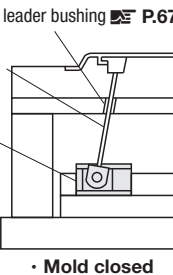


Example

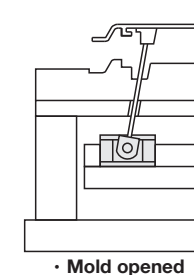
Inclined pin leader bushing P.675

Inclined pin P.669

Slide unit



• Mold closed

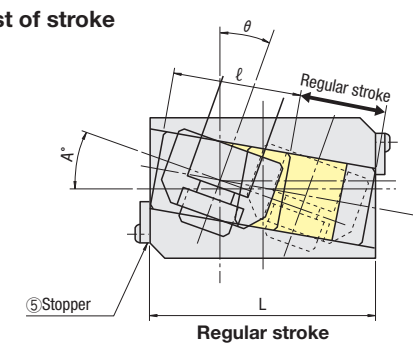


• Mold opened

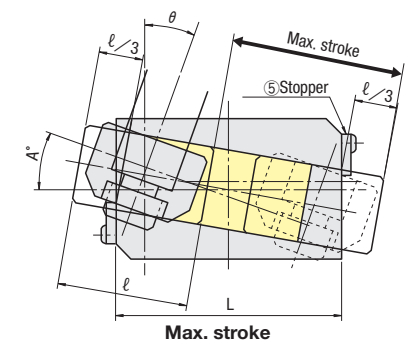
■ **Applicable inclined pin: Example of mounting dimension**

D	D ₁	B	PM
12	11	13	M 5
16	15	14	M 8
20	18	16	M10
25	22	18	M10
30	27.5	20	M10

■ **List of stroke**



Regular stroke



Max. stroke

Part Number	Regular stroke										
	A=0	A=1	A=2	A=3	A=4	A=5	A=6	A=7	A=8	A=9	A=10
SCZN12	20.0	19.6	19.3	19.0	18.7	18.4	18.2	17.9	17.7	17.5	17.3
SCZN16	25.0	24.6	24.3	24.0	23.7	23.4	23.2	23.0	22.8	22.6	22.4
SCZN20	30.0	29.5	29.2	28.8	28.4	28.1	27.8	27.5	27.3	27.0	26.8
SCZN25	35.0	34.5	34.1	33.7	33.3	33.0	32.7	32.4	32.1	31.8	31.6
SCZN30	40.0	39.4	39.0	38.5	38.1	37.7	37.3	37.0	36.7	36.4	36.1

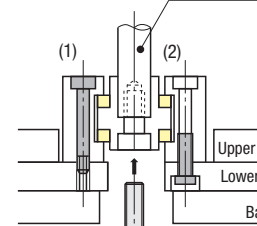
Ⓢ Range of angle θ : $0^\circ \leq \theta \leq 20^\circ$

Part Number	Max. stroke when taking the stopper (5) off										
	A=0	A=1	A=2	A=3	A=4	A=5	A=6	A=7	A=8	A=9	A=10
SCZN12	43.3	42.9	42.6	42.3	42.0	41.7	41.5	41.2	41.0	40.8	40.6
SCZN16	51.6	51.3	51.0	50.7	50.4	50.1	49.9	49.6	49.4	49.3	49.1
SCZN20	56.6	56.2	55.8	55.5	55.1	54.8	54.5	54.2	53.9	53.7	53.5
SCZN25	65.0	64.5	64.1	63.7	63.3	63.0	62.7	62.4	62.1	61.8	61.6
SCZN30	76.6	76.1	75.6	75.2	74.8	74.4	74.0	73.6	73.3	73.0	72.8

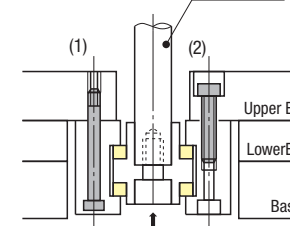
Ⓢ Range of angle θ : $0^\circ \leq \theta \leq 20^\circ$

■ **Mounting examples**

● Mounting examples A



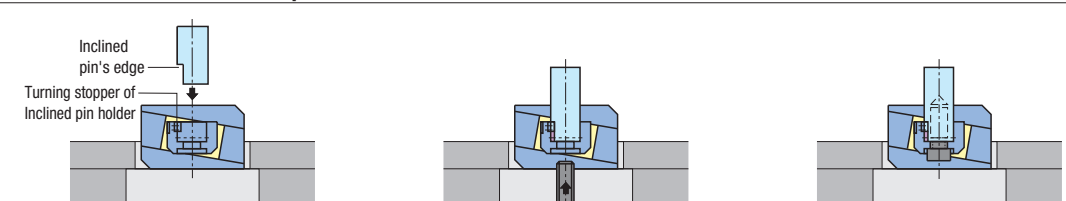
● Mounting examples B



(Use the unit with its slide base up side down.)

- Refer to the above table for dimensions of the inclined pin's edge cutout and screw size (PM). The counterbore in the inclined pin holder is made in a size that accommodates a socket head cap screw with a spring washer.
- The unit can be mounted on an ejector plate in two ways: (1) Screwing into the ejector plate, or (2) Screwing into the unit. For (2) use a socket head cap screw that corresponds to BM in the "Bolt Hole Dimensions" table. For (1) select a rank below the corresponding BM (i.e., M6 screw when BM is M8).
- Prior to mounting, apply * grease to the unit in order to protect it from wear during initial running-in.
- If the stroke is long, it is recommended that you use a bushing that supports the inclined pin. P.675

■ **How to mount the inclined pin**



1. Position the inclined pin's edge cutout on the turning stopper of the inclined pin holder and insert it.

2. Make sure to fix the inclined pin by tightening it up using the socket head cap screws or socket low head cap screws.