



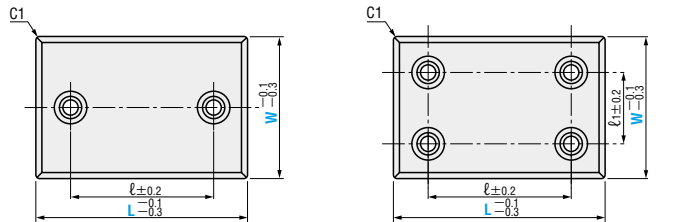
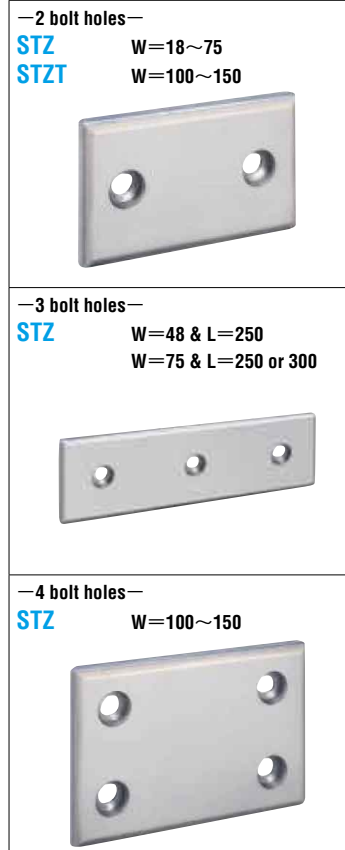
OIL-FREE SLIDE PLATES

—SINTERED ALLOY 10mm TYPE · 2 BOLT HOLES / 3 BOLT HOLES / 4 BOLT HOLES—

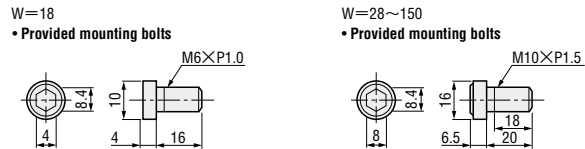
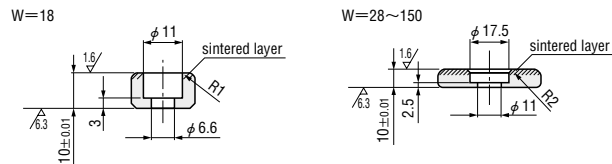


OIL-FREE SLIDE PLATES

—STEEL 20mm / 10mm TYPE · 2 BOLT HOLES / 4 BOLT HOLES—



※For W=28 or 38, R=R2
• The use of initial break-in greasing will make the product more effective.



■ Special sintered alloy
Steel (Baseplate)
▲ Special low head screws

ℓ	Catalog No.	W	L
45	—2 bolt holes— (* 3 bolt holes) STZ	18	75
50			100
75			125
100			150
45			75
50			100
75		125	
100		150	
45		48	75
50			100
75			125
100			150
100*	200		
100*	250		
45	58	75	
50		100	
100		150	
25		75	
50		100	
75		125	
100	75	150	
150		200	
100*		250	
100*		300	
50		100	100
75			125
100	150		
150	200		
200	250		
75	125		
100	—2 bolt holes— STZT	125	150
150			200
200			250
100		150	150
150			200
200			250

ℓ	ℓ ₁	Catalog No.	W	L		
50	50	—4 bolt holes— STZ	100	100		
75				125		
100				150		
150				200		
200				250		
75				75	125	150
100	250					
150	300					
200	150					
100	50	150	200			
150			250			
200			300			
100			100	150	200	
150					250	
200					300	

Order **Catalog No.** — **W** — **L**
STZ — 75 — 125

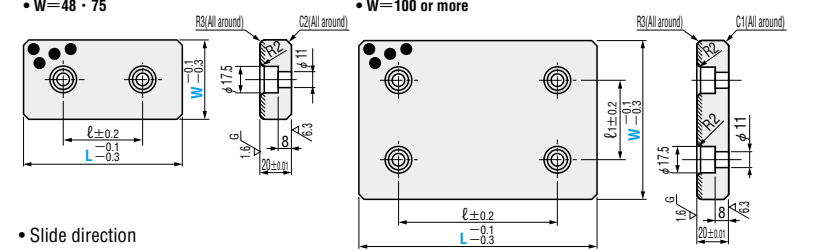
Days to Ship **Quotation**

Price **Quotation**

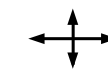
MWPS

• W=48 · 75

• W=100 or more



• Slide direction



■ S45C
Special solid lubricant (embedded)
■ 40HRC~
Induction hardening(///// parts)

ℓ	ℓ ₁	Catalog No.	W	L		
45	—	MWPS	48	75		
50				100		
75				125		
100				150		
150				200		
25				75		
50			75	100		
75				125		
100				150		
150				200		
50				100	100	
75					125	
100	150					
150	200					
200	250					
50	50	MWPS	75		100	
75				125		
100				150		
150				200		
50				75	100	100
75						125
100	150					
150	200					
200	250					

ℓ	ℓ ₁	Catalog No.	W	L		
75	50	MWPS	125	125		
100				150		
150				200		
200				250		
100				100	150	150
150						200
200	250					

Order **Catalog No.** **W** — **L**
MWPS 75 — 75

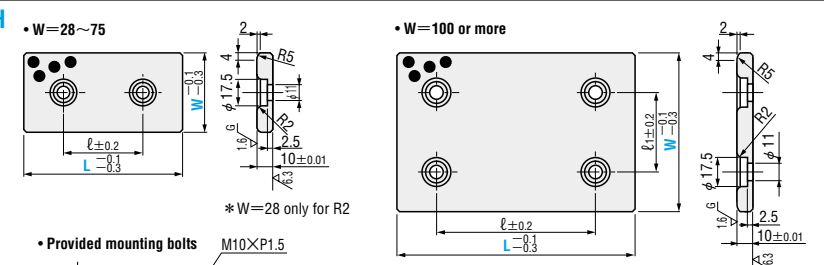
Days to Ship **Quotation**

Price **Quotation**

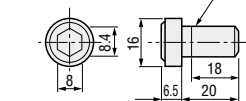
SPTH

• W=28~75

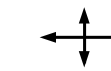
• W=100 or more



• Provided mounting bolts M10×P1.5



• Slide direction



■ SKS3 Special solid lubricant (embedded)
■ 58HRC~
▲ Special low head screws

ℓ	ℓ ₁	Catalog No.	W	L	
45	—	SPTH	28	75	
50				100	
75				125	
100				150	
45				38	75
50					100
75			125		
100			150		
45			48		75
50					100
75				125	
100				150	
25	75	75			
50		100			
75		125			
100		150			

ℓ	ℓ ₁	Catalog No.	W	L	
50	50	SPTH	100	100	
75				125	
100				150	
150				200	
75				125	125
100					150

Order **Catalog No.** **W** — **L**
SPTH 75 — 75

Days to Ship **Quotation**

Price **Quotation**