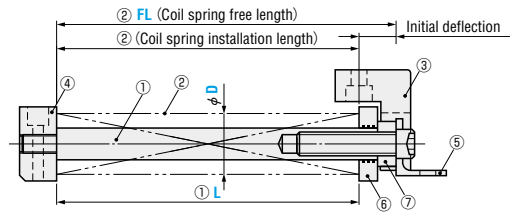


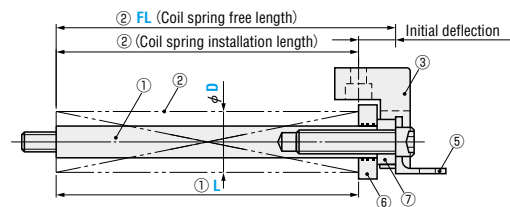
CAM RETURNING UNITS

RoHS

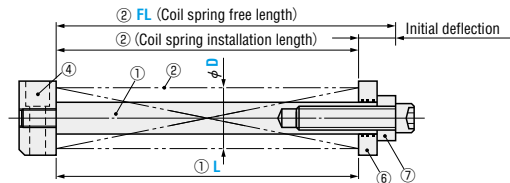
CUKI



CUKS



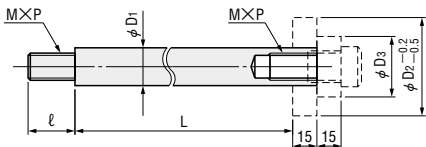
CUKA



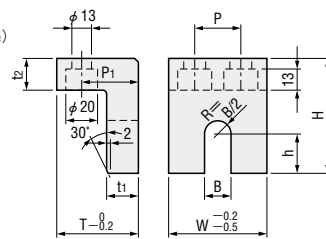
- ② Coil spring specifications
 - SWF P.1369
 - SWL P.1369
 - SWM P.1370
 - SWH P.1370
 - ⑥ Separate disk (CUKSD) specifications P.1368
 - ⑦ Pressure disk (CUKPD) specifications P.1368
- (Spring guide unit)
- ① Guide pin S45C
 - ② Coil Spring 50HRC~ (Induction hardened)
 - ③ Slide angle SS400
 - ④ Fixed plate SS400
 - ⑤ Support angle SS400
 - ⑥ Hexagon socket head set screw M8
 - ⑦ Pressure disk FC250
 - Special solid lubricant (embedded)
 - ⑦ Pressure disk SS400

⚠ This unit product is temporarily assembled.

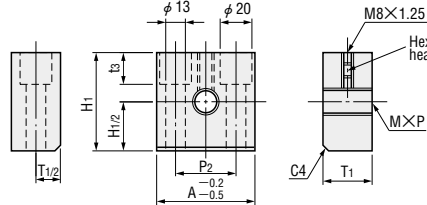
① CUKGP (Guide pin: Details P.1368)



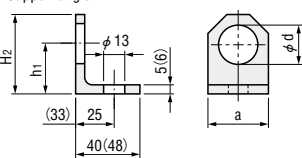
③ CUKSA (Slide angle)



④ CUKFP (Fixed plate)



⑤ CUKFA (Support angle)



⚠ Figures in () are for D=70.

D	① Guide pin					③ Slide angle								④ Fixed plate				⑤ Support angle					
	D1	D2	D3	M×P	ℓ	H	h	W	B	P	T	t1	t2	P1	T1	A	P2	H1	t3	a	H2	h1	d
40	19	50	28	12×1.75	24	70	25	60	33	30	50	20	20	35	25	55	30	50	15	27	40	25	19
50	24	60	36	16×2.0	28	85	30	70	41	40	60	25	25	40	32	60	35	60	20	35	48	30	25
60	29	70	43			95	35	80	48	50						70	40	70	30	42	56	35	
70	35	80	48	20×2.5	33	97	27	90	54	50	63	28	28	43	35	80	45	80	30	43	65	40	31

Catalog No.	D	② FL	② Type	① L: 1mm increments																				
				90	100	125	150	175	200	250	300	350	*400	*450	*500									
CUKI CUKS CUKA	40	F (SWF) L (SWL)	①	68~90	80~100	90~125	105~150	130~175	145~200	195~250	—	—	—	—	—	—	—	—	—	—	—	—	—	
	50			95~125	110~150	120~175	135~200	185~250	225~300	275~350	325~400	375~450	425~500	—	—	—	—	—	—	—	—	—	—	—
	60			—	—	—	—	—	—	—	—	—	—	—	—	—	—	—	—	—	—	—	—	—
	70	M (SWM) H (SWH)	①	68~90	80~100	90~125	105~150	130~175	145~200	195~250	—	—	—	—	—	—	—	—	—	—	—	—	—	
	40			95~125	110~150	120~175	135~200	185~250	225~300	275~350	—	—	—	—	—	—	—	—	—	—	—	—	—	
	50			—	—	—	—	—	—	—	—	—	—	—	—	—	—	—	—	—	—	—	—	—
60	—	—	—	—	—	—	—	—	—	—	—	—	—	—	—	—	—	—	—	—	—	—		

⚠ *FL 400 and larger are specifications available for SWF only.



Order

Catalog No. **CUKI** D **40** — ② Type **F** — ② FL **100** — L **L85**



Days to Ship

Quotation



Price

Quotation

③ Slide angle

Coil spring outer diameter D	Catalog No.	
	Type	No.
40	CUKSA	40
50		50
60		60
70		70

④ Fixed plate

Coil spring outer diameter D	Catalog No.	
	Type	No.
40	CUKFP	40
50		50
60		60
70		70

⑤ Support angle

Coil spring outer diameter D	Catalog No.	
	Type	No.
40	CUKFA	40
50		50
60		60
70		70



Order

Catalog No. **CUKSA 40**



Example



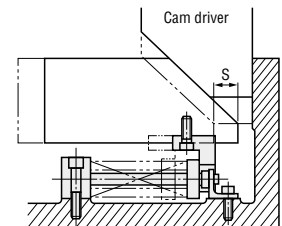
Days to Ship

Quotation



Price

Quotation



How to select springs and determine L dimensions

- ① Set the required preload and stroke (S).
- ② Select springs based on the coil spring specifications (P. 1369~1370) and taking into account Preload: spring constant × So (preload deflection)
Max. deflection: So + S ≤ deflection chosen by life cycle on P. 1369~1370
- ③ Obtain L dimension by FL (free length) — So (preload deflection).