

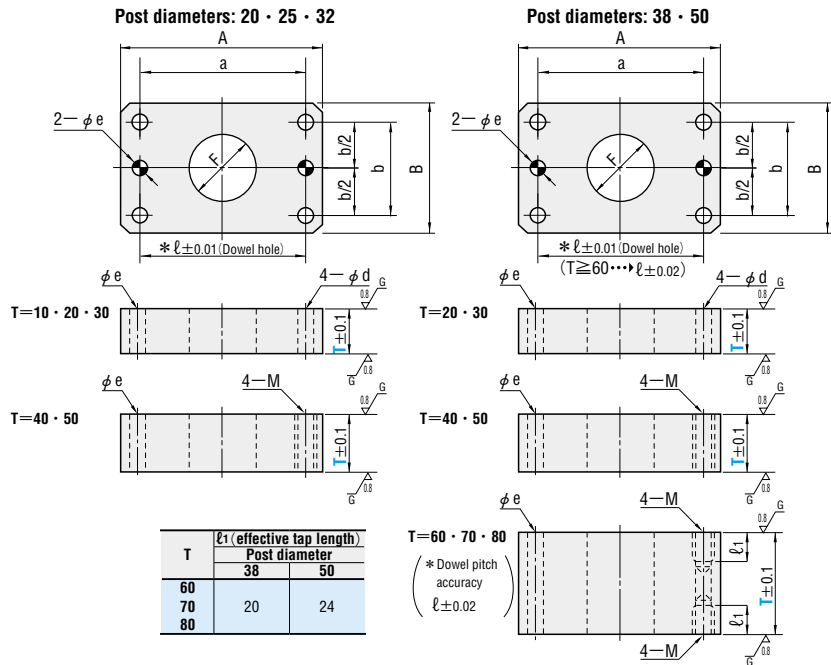
# SPACERS FOR GUIDE POST SETS

—STEEL TYPE—

RoHS

## Spacers for guide bushings

MGSPS (With dowel holes)



Flatness of plate thickness: 0.02mm/100mm or less

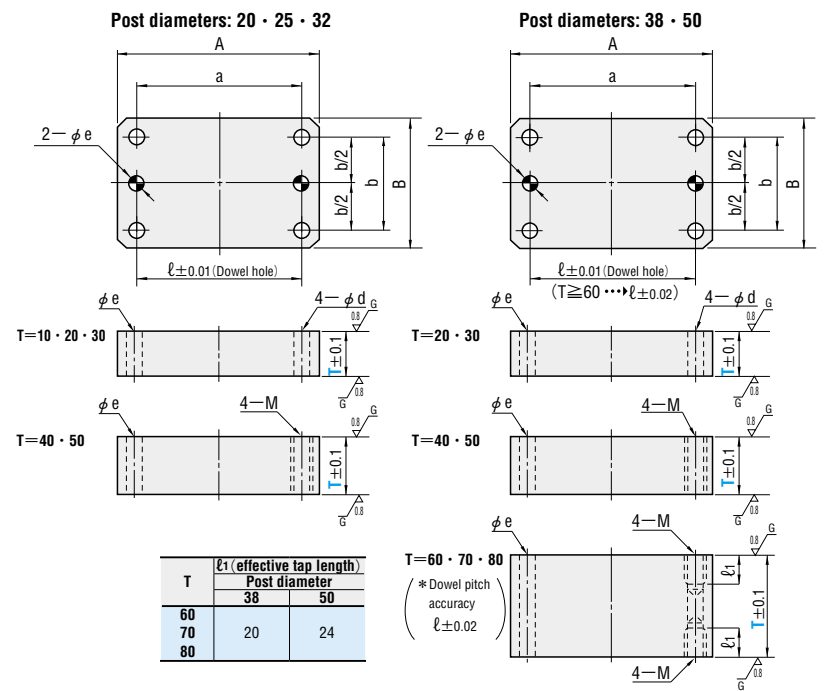
SS400



RoHS

## Spacers for guide holders

MGLPS (With dowel holes)



Flatness of plate thickness: 0.02mm/100mm or less

SS400



Post diameter	A	B	a	b	d	M	F	*For $l \pm 0.01$ (* T60·70·80, $l \pm 0.02$ )	eH7		T						
20	74	44	56	30	6.6	6	28	56	6	$+0.012$ 0	10	20	30	40			
25	84	48	66	30	9	8	34	66	8	$+0.015$ 0	10	20	30	40	50		
32	100	58	76	36	11	10	42	76	8		10	20	30	40	50		
38	130	75	100	44	11	10	52	100	10		20	30	40	50	60	70	80
50	155	90	125	60	14	12	62	125	10		20	30	40	50	60	70	80

Catalog No.		T	
Type	Post diameter		
For bushings	MGSPS	20	10 20 30 40
		25	10 20 30 40 50
		32	10 20 30 40 50
For holders	MGLPS	38	20 30 40 50 60 70 80
		50	20 30 40 50 60 70 80



Order

Catalog No. — T  
MGSPS 20 — 30



Days to Ship

Quotation

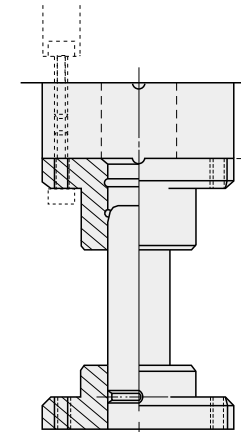


Price

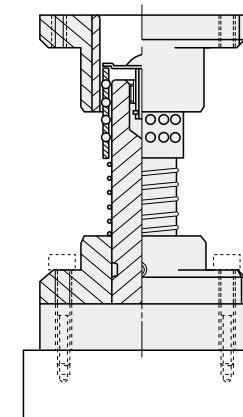
Quotation



Example



T=40 · 50 ·  
60 · 70 · 80



T=10 · 20 · 30