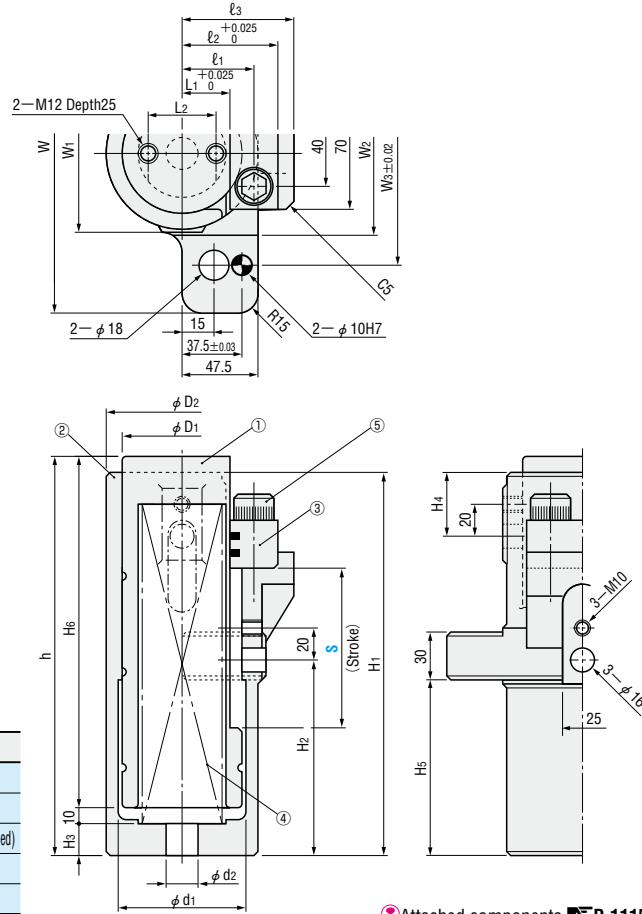


FLANGE LIFTERS

— WITH OIL GROOVE —

FLOF



Components list

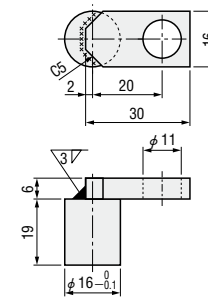
No.	Name	Qty.	Material & remarks
①	Sliding guide bar	1	FCD450
②	Base	1	FC250
③	Stopper	1	S45C + Special solid lubricant (embedded)
④	Spring	1	MISUMI
⑤	Hexagon socket head cap bolt	2	M16×60

Attached components P.1115

S	D1	D2	d1	d2	H1	H2	H3	H4	H5	H6	h	L1	L2	ℓ_1	ℓ_2	ℓ_3	W	W1	W2	W3
60	60	80	65	20	150	67.5	15	40	55	135	160	25	30	40	55	65	155	82	84	125
80	65	85	70	20	185	97.5	15	40	75	170	195	25	30	40	55	65	160	87	89	130
120	75	95	80	30	240	122.5	20	45	95	220	250	30	40	45	60	70	170	97	99	140

Spring	During installation		Final		Catalog No.	Stroke S (mm)
	Length (mm)	Load (N)	Length (mm)	Load (N)		
X-SWF40-200	175	313	115	1063	FLOF	60
X-SWL40-250	235	318	155	2014		80
X-SWF50-350	320	336	200	1680		120

Locking pin FLLP



SS400



Order

Catalog No.	S
FLOF	60
FLLP	



Days to Ship

Quotation



Price

Quotation



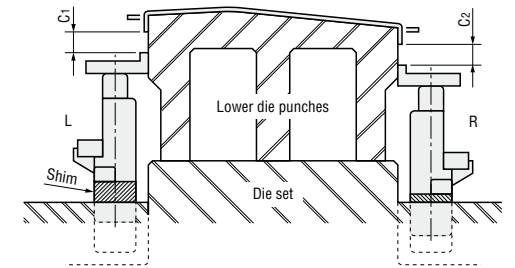
Alterations

Catalog No.	(D · N · T · W)
FLOF60	D - T - W

Alterations	Code	Spec.
Stroke end block	D	Install stroke end block.
$2-\phi 8H7$	N	Pin hole for machining.
—	T	④ Change to TOHATSU spring.
—	W	③ Change stopper material to copper alloy with special solid lubricant



Example



To unify the timing of lifter contact parts, it is necessary to make sure that C_1 equals to C_2 when lifter is at bottom-dead-center. To make C_1 equal to C_2 , use shims to adjust it.