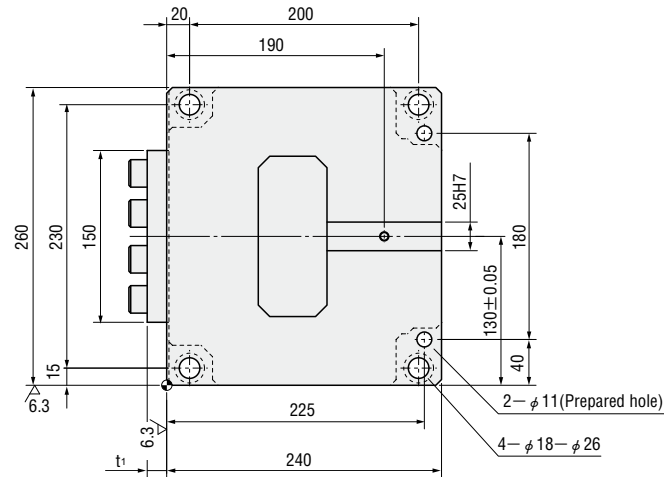


# FLYING CAM UNITS FOR TRIM & FLANGE

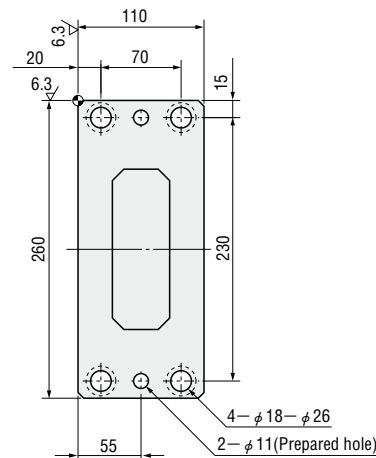
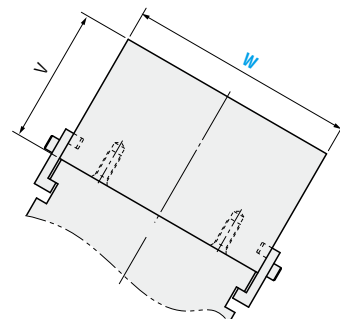
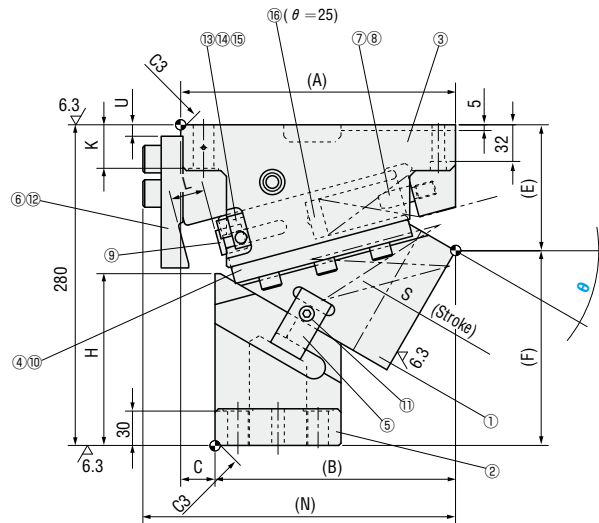
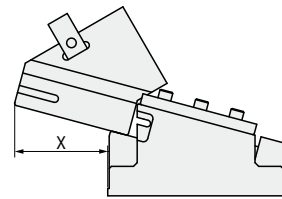
— MGFTT · MEFTT —



MGFTT200  
MEFTT200 (Economy type)



■ Rear removal space



■ Components table P.1247

W	θ	A	B	C	E	F	H	K	L	N	V	U	t <sub>1</sub>	X		
200	00	240	180	60	90	190	90	38	40	273	100	60	17	83		
	05	236.82	176.82		78.84	201.16	86.1			269.82	130			273	100	35
	10	240	180		90	190	120.2			287.35	130	274	100		15	
	15	254.35	194.35		81.51	198.49	116			287.27	130		273	120		10
	20	240	190	50	110	170	130	287.27	130	273	140	10		17	130	
	25	253.27	203.27		102.6	177.4	125		280.41		130		273		120	10
	30	240	210	30	110	170	150	280.41	140	272	140	10		16	142	
	35	252.34	222.34		109.69	170.31	150		280.41		140		272		140	10
	40	240	210	115	165	160	280.41	140		272	140	10		16	142	
	45	247.41	217.41	114.68	165.32	160		280.41	140		272		140		10	16
	50		230	10	120	160	280.41		140	272		140	10	16		
	55							280.41	140		272	140			10	16
	60	240	240	0	145	135	280.41		140	272		140	10	16		
	65							280.41	140		272	140			10	16
70						180	20		272	140		10	16	142		

Slide Stroke S	Working force KN (tonf)		Spring load N (kgf)			Total weight kg	Catalog No.	W	θ
	Standard working force	Max. working force	Preload	5mm before bottom dead center	Max. load				
28.3	98.1(10.0)	196.1(20.0)	630( 64.2)	4775(487.0)	5670(578.2)	81.5	MGFTT MEFTT (Economy type)	200	00
28.4			5152(525.4)	6182(630.4)	82.3	05			
33.3			294( 30.0)	5299(540.4)	6182(630.4)	75.7			10
33.9			5314(541.9)	80.5	15				
30.9			5080(518.0)	5998(611.6)	76.1	20			
32.0			5116(521.6)	80.1	25				
33.5			4851(494.7)	77.0	30				
35.4			4904(500.1)	80.9	35				
39.0			4974(507.3)	71.4	40				
42.3			5027(512.7)	74.7	45				
46.7	5080(518.0)	71.6	50						
52.3	5133(523.4)	78.6	55						
60.0	5204(530.6)	73.9	60						
47.3	1104(112.6)	5056(515.6)	77.2	65					
58.5	5145(524.6)	72.2	70						

Order    Catalog No.

Price

Days to Ship

Alterations     Catalog No.   (HK · DK...etc.)

Alterations	Code	Spec.	Alterations	Code	Spec.
	HK	Finish dowel hole on holder Only 12, 13 or 16 can be specified φ 11(Prepared hole) ⇒ φ 12H7, φ 13H7 or φ 16H7		HDK	Finish dowl holes on driver & holder Only 12, 13 or 16 can be specified φ 11(Prepared hole) ⇒ φ 12H7, φ 13H7 or φ 16H7
	DK	Finish dowel hole on driver Only 12, 13 or 16 can be specified φ 11(Prepared hole) ⇒ φ 12H7, φ 13H7 or φ 16H7		K	Add locating key (With 1 hexagon socket head cap screw M8×15)