

LIFTING EYE BOLTS / CAST-IN BUSH

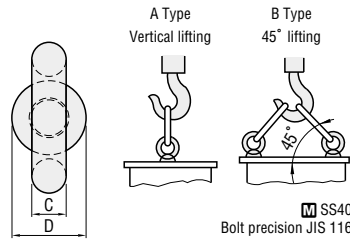
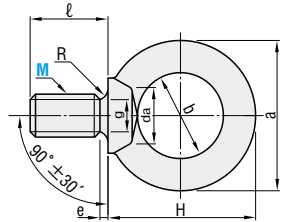
HOOKS

—BOLT TYPE / LARGE HEAD BOLT TYPE—

Lifting eye bolts —For vertical lifting—

RoHS

CHI



SS400
Bolt precision JIS 1168

M×P	a	b	C	D	H	ℓ	e	g	R	da	Max. allowable load N (kgf)		Catalog No.	Base unit price	Volume discount unit price		
											A: Vertical, 1 bolt	B: 45°, 2 bolts			Type	M	1~19 pieces
6×1.0	24.9	14.5	5.2	12.8	28.5	15	3	4.7	1.0	7.9	392 { 40 }	392 { 40 }	CHI	1~19 pieces	20~49	50~99	100~200
8×1.25	32.6	20	6.3	16	33.3	15	3	6	1.0	9.2	785 { 80 }	785 { 80 }					
10×1.5	41	25	8	20	41.5	18	4	7.7	1.2	11.2	1471 { 150 }	1471 { 150 }					
12×1.75	50	30	10	25	51	22	5	9.4	1.4	14.2	2157 { 220 }	2157 { 220 }					
16×2.0	60	35	12.5	30	60	27	5	13	1.6	18.2	4413 { 450 }	4413 { 450 }					
20×2.5	72	40	16	35	71	30	6	16.4	2	22.4	6178 { 630 }	6178 { 630 }					
24×3.0	90	50	20	45	90	38	8	19.6	2.5	26.4	9316 { 950 }	9316 { 950 }					
30×3.5	110	60	25	60	110	45	8	25	3	33.4	14710 { 1500 }	14710 { 1500 }					
36×4.0	133	70	31.5	70	132	55	10	30.3	3	39.4	22555 { 2300 }	22555 { 2300 }					
42×4.5	151	80	35.5	80	151	65	12	35.6	3.5	45.6	33342 { 3400 }	33342 { 3400 }					
48×5.0	170	90	40	90	170	70	12	41	4	52.6	44130 { 4500 }	44130 { 4500 }					

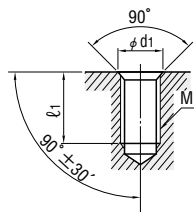
•Load (kgf)=Load (N)×0.101972

Quotation

Installation

Tighten the lifting eye bolt lightly by hand so that the seat of the bolt is firmly in contact with the plate.

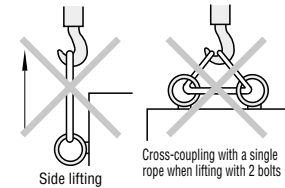
Catalog No.	d ₁	ℓ ₁
6	9	17
8	11	17
10	13	20
12	16	24
16	20	30
20	24	34
24	28	42
30	36	50
36	42	60
42	48	70
48	56	76



When 2 lifting eye bolts are used for lifting, install the bolts so that they face in the same direction.



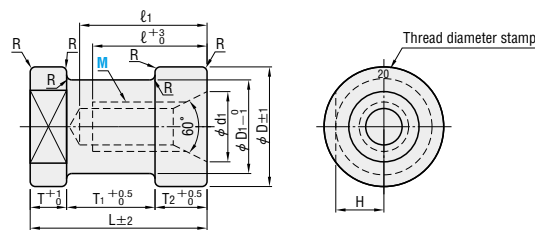
Never attempt the types of lifting shown in the diagram.



Cast-in bush

RoHS

CSN



S35C

Lifting bolt	Max. allowable load N (kgf)	M×P	D	D ₁	d ₁	ℓ	ℓ ₁	L	T	T ₁	T ₂	H	R	Catalog No.		Base unit price
														Type	M	
2 bolts	Vertical, 1 bolt	45°, 2 bolts	12×1.75	38	28	18	30	40	55	10	30	15	14	2	CSN	1~19 pieces
3730 { 380 }	2160 { 220 }	2160 { 220 }	16×2.0	46	36	22	35	45	55	10	30	15	18	2		
6620 { 675 }	4410 { 450 }	4410 { 450 }	20×2.5	48	38	28	45	55	70	15	35	20	19	2		
8830 { 900 }	5880 { 600 }	5880 { 600 }	24×3.0	55	45	36	55	65	85	20	45	20	22.5	2		
13340 { 1360 }	9810 { 1000 }	9810 { 1000 }	30×3.5	65	52	42	65	75	95	25	50	20	26	3		
19810 { 2020 }	16670 { 1700 }	16670 { 1700 }	36×4.0	85	70	48	75	90	110	30	55	25	35	3		

•Load (kgf)=Load (N)×0.101972

Order
CHI 10
CSN 24

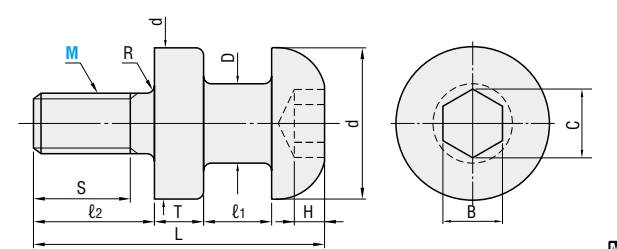
Price
Quotation

Days to Ship
Quotation

Example

RoHS

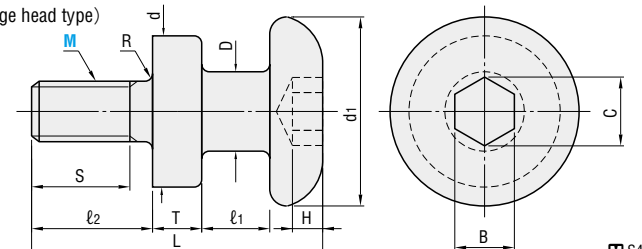
CHN



S45C
Black oxide (Fe₃O₄)

RoHS

CHNL (Large head type)

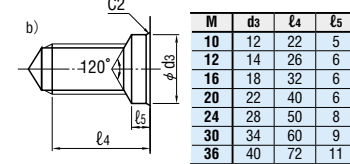
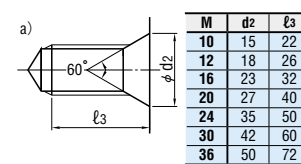


S45C
Black oxide (Fe₃O₄)

M×P	D	d	d ₁	ℓ ₁		ℓ ₂	S	T	L		R	H	B	C	N/piece (kgf/piece) (For steel, safety factor 10)	Catalog No.						
				CHN	CHNL				CHN	CHNL						Type	M	CHN	CHNL			
10×1.5	13	32	42	10	18	20	16	8	46	54	1.5	5	8	9.2	2452 { 250 }	CHN CHNL	10	16	20	24	30	36
12×1.75	16	36	48	13	20	24	20	10	57	64	1.5	6	10	11.7	3530 { 360 }							
16×2.0	20	40	52	18	25	30	25	13	75	82	2	9	14	16.3	6669 { 680 }							
20×2.5	25	48	62	20	28	37	32	16	90	98	2	12	17	19.8	10395 { 1060 }							
24×3.0	32	58	76	25	33	47	40	20	111	119	2.5	13	19	22.1	15004 { 1530 }							
30×3.5	36	68	88	30	40	56	48	22	131	141	3	16	22	25.6	23830 { 2430 }							
36×4.0	40	78	100	30	40	68	58	25	148	158	3	18	27	31.4	34814 { 3550 }							

•Load (kgf)=Load (N)×0.101972

Installation The bolt holes for installation should be machined as shown in figure a) or b) below. The head of CHN and CHNL should be in tight contact with the side surface of the die set when the bolts are used.



Order
Catalog No.
CHNL 20

Example

Days to Ship
Quotation

Price
Quotation

Install so that the wire can be passed under the hook without contacting the bottom surface.
<Large head type>