

## Clamp Lock Pins• with button handle

22420.0052



## Product Description

For rapid fastening, locking, adjusting, replacing, and securing in blind holes (H11) without additional locating bushings.

Quick and easy to release for connections which are made repeatedly. Flexible use because the balls are clamped between bolt and hole.

All versions are corrosion resistant. When using stainless steel 1.4542: high-strength, hardened, abrasion resistant pin with high load capacity.

## Material

## Pin part

- Stainless steel 1.4542, precipitation-hardened

## Handle

- Aluminium, black similar to RAL 9005

## Press button

- Stainless steel, yellow similar to RAL 1016

## Spring

- stainless steel

## Assembly

Simple H11 boreholes are sufficient.

## More information

## Notes

Special types on request.

The clamp lock pin must not be used for lifting loads.

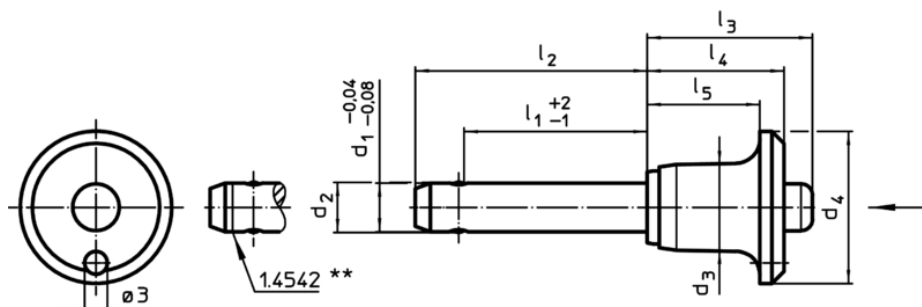
## Accessories

Can easily be fitted with retaining cable EH 22400.

## Further products

- Retaining Cables

## Drawing



\*\* Types from stainless steel 1.4542 with marking.

## Order information

Dimensions									Location hole H11	 min. max.			Shearing resistance, double <sup>1)</sup> min.	Art. No.
d <sub>1</sub>	l <sub>1</sub>	d <sub>2</sub>	d <sub>3</sub>	d <sub>4</sub>	l <sub>2</sub>	l <sub>3</sub>	l <sub>4</sub>	l <sub>5</sub>						
-0,04	+2	+0,1												
-0,08	-1	-0,05												
[mm]									[mm]	[°C]		[g]	[kN]	
stainless steel														
8	60	8,3	14,1	25	68,6	27,3	22,6	18,6	8	-30	150	43	63	22420.0052

<sup>1)</sup> Shearing resistance similar to DIN 50141

Application example

