

Clamp Lock Pins• with button handle

22420.0072



Product Description

For rapid fastening, locking, adjusting, replacing, and securing in blind holes (H11) without additional locating bushings.

Quick and easy to release for connections which are made repeatedly. Flexible use because the balls are clamped between bolt and hole.

All versions are corrosion resistant. When using stainless steel 1.4542: high-strength, hardened, abrasion resistant pin with high load capacity.

Material

Pin part

- Stainless steel 1.4542, precipitation-hardened

Handle

- Aluminium, black similar to RAL 9005

Press button

- Stainless steel, yellow similar to RAL 1016

Spring

- stainless steel

Assembly

Simple H11 boreholes are sufficient.

More information

Notes

Special types on request.

The clamp lock pin must not be used for lifting loads.

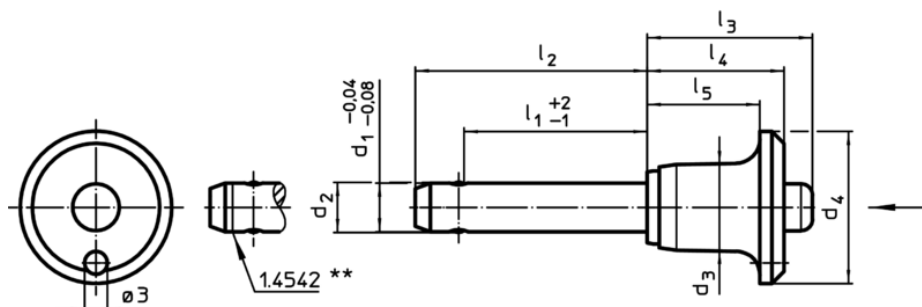
Accessories

Can easily be fitted with retaining cable EH 22400.

Further products


- Retaining Cables

Drawing



** Types from stainless steel 1.4542 with marking.

Order information

| Dimensions | | | | | | | | | Location hole H11 |  min. max. | |  | Shearing resistance, double ¹⁾ min. | Art. No. |
|-----------------|----------------|----------------|----------------|----------------|----------------|----------------|----------------|----------------|----------------------|---|-----|---|---|------------|
| d ₁ | l ₁ | d ₂ | d ₃ | d ₄ | l ₂ | l ₃ | l ₄ | l ₅ | | | | | | |
| -0,04 -0,08 | +2 -1 | +0,1 -0,05 | | | | | | | | | | | | |
| [mm] | | | | | | | | | [mm] | [°C] | | [g] | [kN] | |
| stainless steel | | | | | | | | | | | | | | |
| 10 | 80 | 10,3 | 14,1 | 25 | 100 | 27,3 | 22,6 | 18,6 | 10 | -30 | 150 | 70 | 100 | 22420.0072 |

¹⁾ Shearing resistance similar to DIN 50141

Application example

